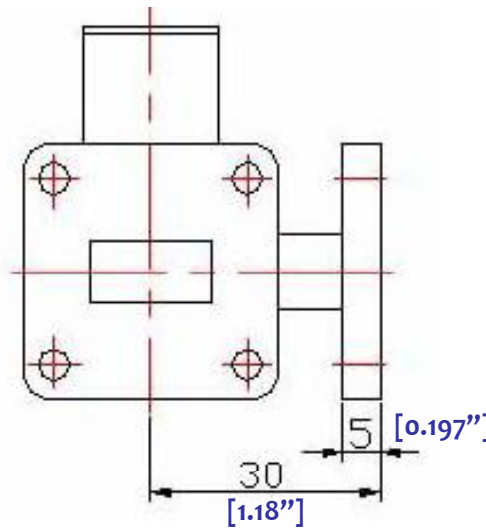
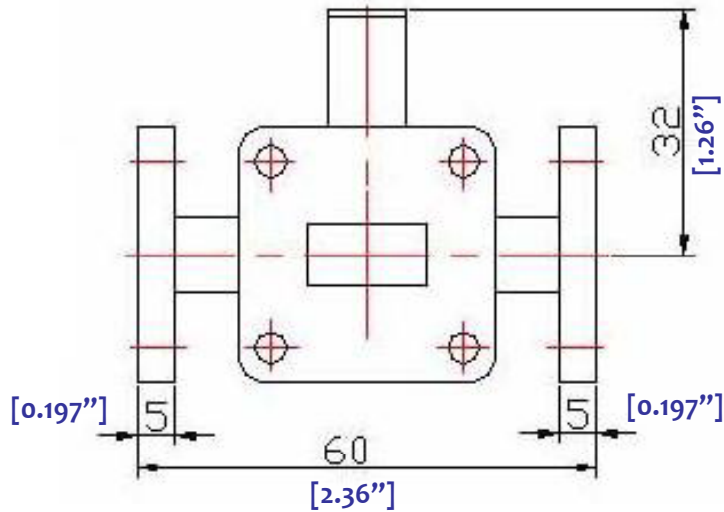
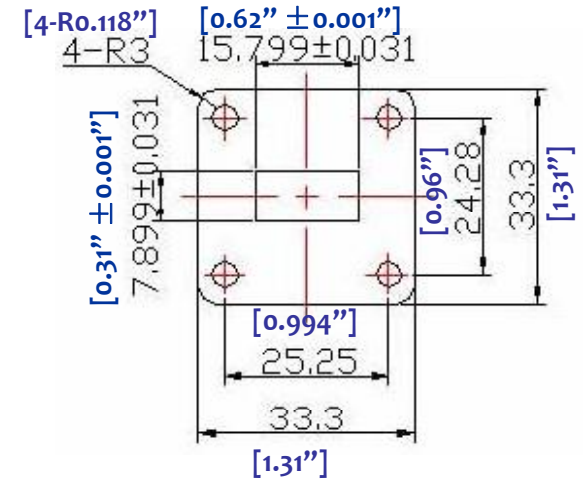


# WAVEGUIDE MAGIC TEE POWER COMBINER


## - RWCB62W2B



3.0 Electrical Specifications		
3.1	Frequency Range	12.4-18GHz
3.2	Insertion Loss	0.4dB
3.3	VSWR	1.25 : 1(in arm H) 1.50:1(in arm E)
3.4	Amp Balance	0.3dB

1.0 Mechanical Specifications		
1.1	Waveguide type	Rectangular Waveguide WR62
1.2	Flange type	COVER (Other type available)
1.3	Flange Holes	Through
1.4	Basis-material	Aluminum or Cuprum Alloyed
1.5	Internal Body Finish	Silver Plated chromate or conversion
1.6	External Body Finish	Body painted with gray/black epoxy enamel

2.0 Environment specifications		
2.1	Operation Temp.	-40°C~+85°C
2.2	Storage Temp.	-60°C~+125°C
2.3	Altitude	45000 ft
2.4	Vibration	10g rms (15 degree 2KHz)
2.5	Humidity	100% RH at 35c, 95%RH at 40 deg c
2.6	Shock	20G for 11msc

PAGE 1 OF 1		DATE	Aug 23 <sup>rd</sup> 2003
<small>PROPRIETARY INFORMATION THE INFORMATION CONTAINED IN THIS DOCUMENT IS THE PROPERTY OF RF-LAMBDA EXCEPT AS SPECIFICALLY AUTHORIZED IN WRITINGS BY RF-LAMBDA. THE HOLDER OF THIS DOCUMENT SHALL KEEP ALL INFORMATION CONTAINED HEREIN CONFIDENTIAL AND SHALL PROTECT SAME IN THE WHOLE OR IN PART FROM DISCLOSURE AND DISSEMINATION OF ALL THIRD PARTIES AND SHALL USE SAME FOR OPERATING AND MAINTENANCE PURPOSES ONLY</small>		DESIGN	RFPC
		RF-LAMBDA	RFPC
		CAD MODEL REVISION	10
		ASSEMBLY REVISION	VS2DS
 <b>RWCB62W2B WAVEGUIDE MAGIC TEE COMBINER</b>		ASSEMBLY NAME	RFLVR02
		DRAWING NUMBER	D01-1
www.rflambda.com		SIZE	LT
RF-LAMBDA		SHEETS	1 OF 1