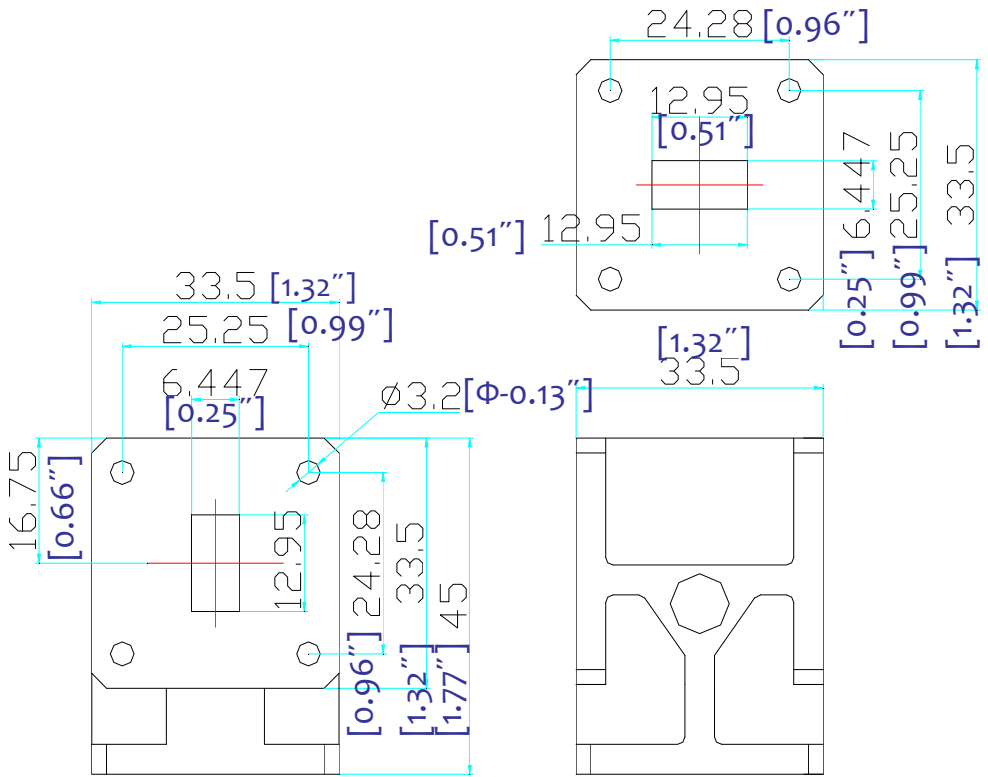



# WAVEGUIDE HIGH POWER CIRCULATOR- -- RFWC51A



1.0 Mechanical Specifications		
1.1	Waveguide type	Rectangular Waveguide WR51
1.2	Flange type	COVER 4 holes flat
1.3	Flange Holes	Through
1.4	Basis-material	Aluminum, Brass, Alloyed Cuprum, Stainless
1.5	External Body Finish	Body painted with gray/black epoxy enamel

2.0 Environment specifications		
2.1	Operation Temp.	-40°C~+85°C
2.2	Storage Temp.	-50°C~+125°C
2.3	Altitude	30,000 ft
2.4	Vibration	10g rms (15 degree 2KHz)
2.5	Humidity	100% RH at 35c, 95%RH at 40 deg c
2.6	Shock	20G for 11msc

3.0 Electrical Specifications		
3.1	Frequency Range	15-22GHz (Center Frequency)
3.2	Bandwidth	10% center
3.3	Average Power	50W CW
3.4	Peak Power	1KW (1% 0.5us)
3.5	Insertion Loss	0.25dB
3.6	Isolation	20dB
3.7	Max. VSWR	1.20:1

PAGE 1 OF 1		DATE	Nov 5 <sup>th</sup> 2004
<small>PROPRIETARY INFORMATION THE INFORMATION CONTAINED IN THIS DOCUMENT IS THE PROPERTY OF RF-LAMBDA EXCEPT AS SPECIFICALLY AUTHORIZED IN WRITINGS BY RF-LAMBDA. THE HOLDER OF THIS DOCUMENT SHALL KEEP ALL INFORMATION CONTAINED HEREIN CONFIDENTIAL AND SHALL PROTECT SAME IN THE WHOLE OR IN PART FROM DISCLOSURE AND DISSEMINATION OF ALL THIRD PARTIES AND SHALL USE SAME FOR OPERATING AND MAINTENANCE PURPOSES ONLY</small>		DESIGN	RFPC
		RF-LAMBDA	RFPC
		CAD MODEL REVISION	19
		ASSEMBLY REVISION	V552
 <b>RFWC51A WAVEGUIDE CIRCULATOR</b>		ASSEMBLY NAME	RFLVR17
		DRAWING NUMBER	D05-1
www.rflambda.com		RF-LAMBDA	SIZE LT SHEETS 1 OF 1