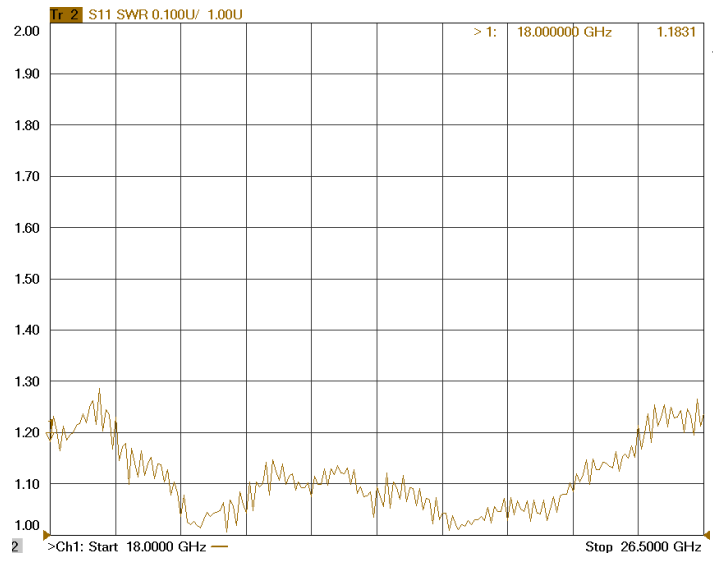
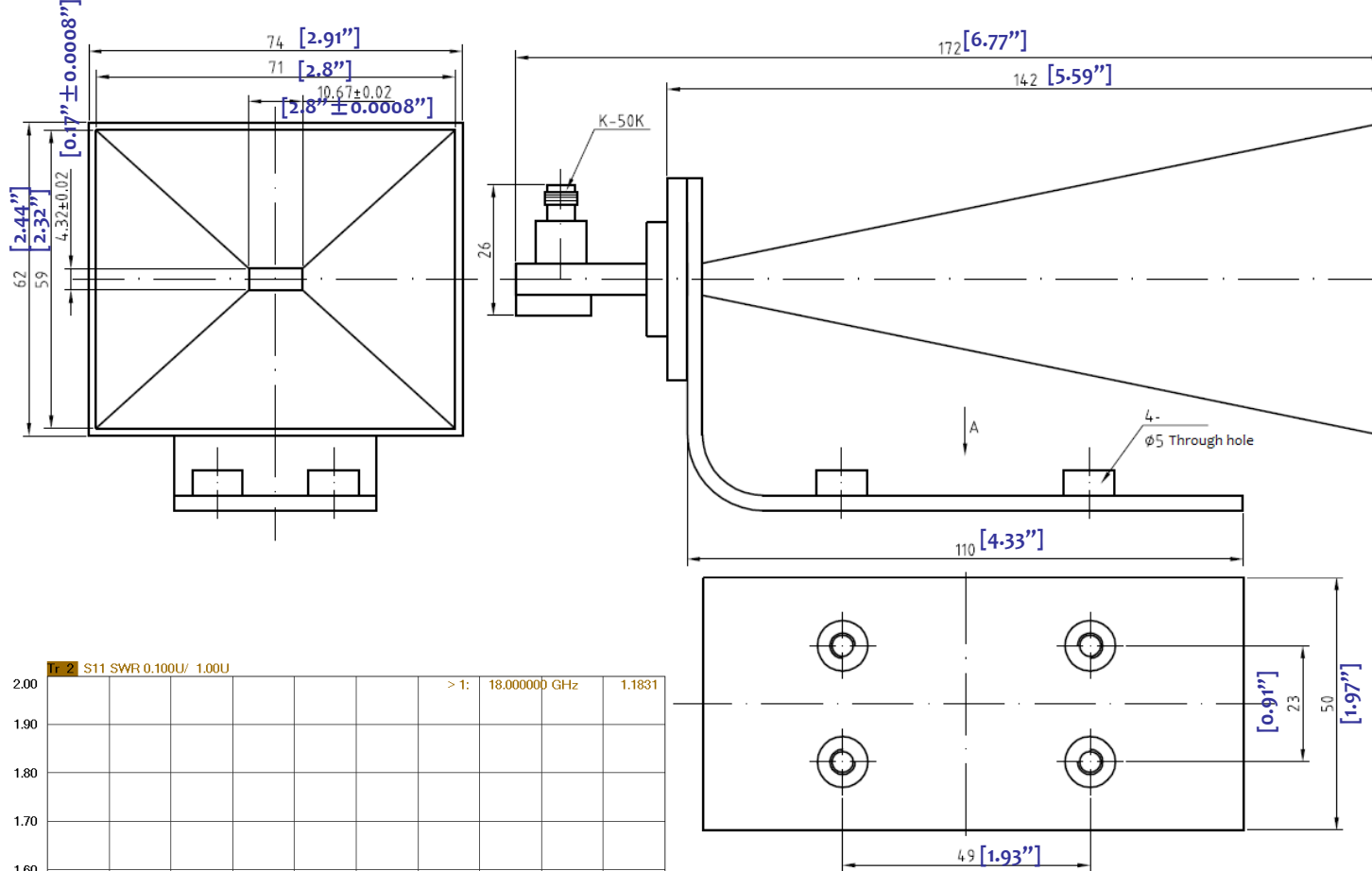



# WR42 WAVEGUIDE STANDARD GAIN HORN ANTENNA – RW42HORN24E

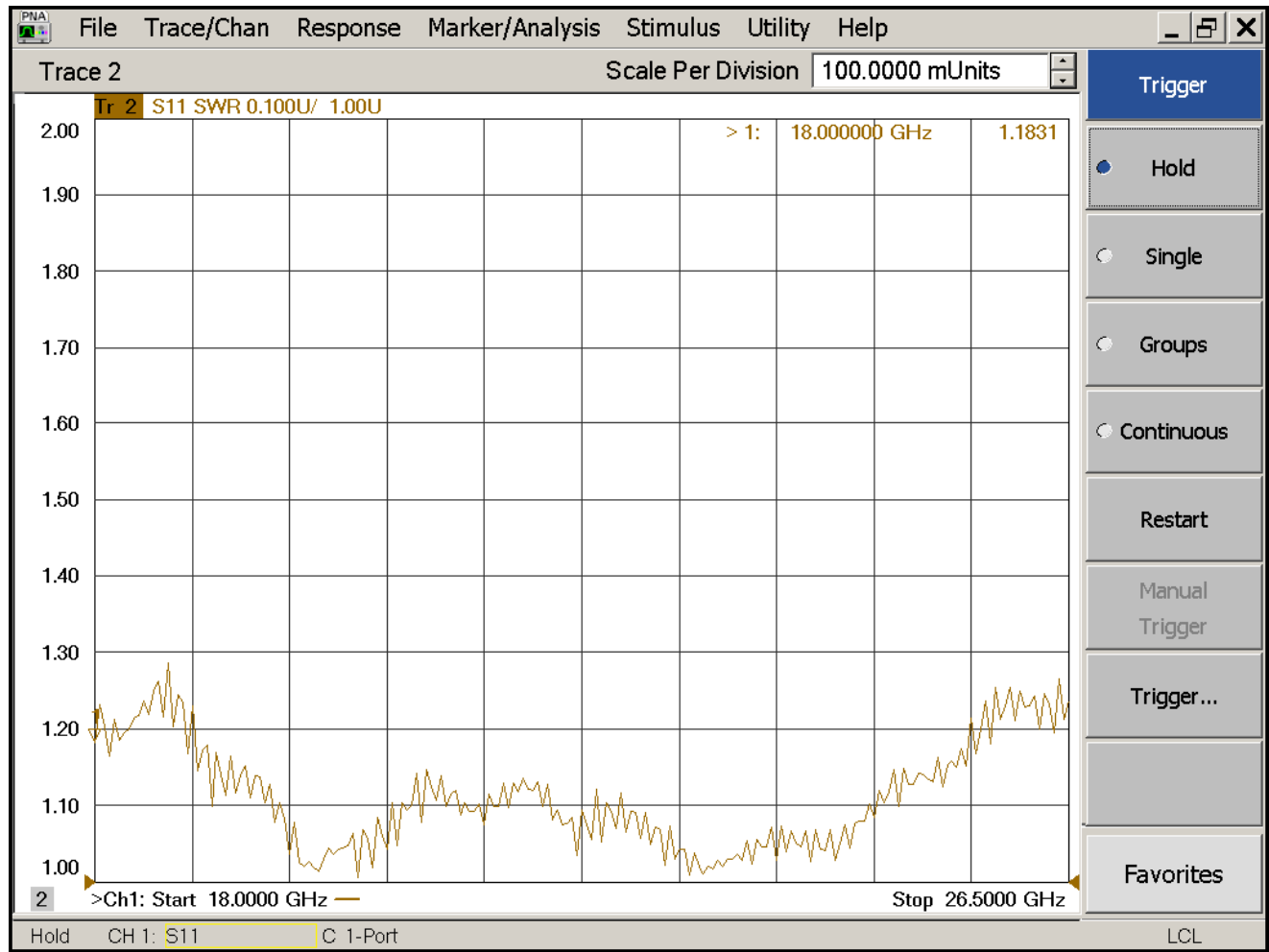



3.0 Electrical Specifications		
3.1	Frequency	18-26.5GHz
3.2	Gain	24.7dB
3.2	VSWR	1.5:1 (max)

2.0 Environment specifications		
2.1	Operation Temp.	-40°C~+70°C
2.2	Storage Temp.	-50°C~+125°C
2.3	Altitude	45000 ft
2.4	Vibration	10g rms (15 degree 2KHz)
2.5	Humidity	100% RH at 35c, 95%RH at 40 deg c
2.6	Shock	20G for 11msc

1.0 Mechanical Specifications		
1.1	Waveguide type	Rectangular Waveguide <b>WR42</b>
1.2	Flange type	CPRF, COVER
1.3	Flange Holes	Through
1.4	Basis-material	Brass
1.5	Internal Finish	Silver Plated chromate or conversion
1.6	External Finish	Body painted with gray/black epoxy enamel

PAGE 1 OF 1	DATE Jun 21 <sup>st</sup> 2006
<small>PROPRIETARY INFORMATION THE INFORMATION CONTAINED IN THIS DOCUMENT IS THE PROPERTY OF RF-LAMBDA EXCEPT AS SPECIFICALLY AUTHORIZED IN WRITING BY RF-LAMBDA. THE HOLDER OF THIS DOCUMENT SHALL KEEP ALL INFORMATION CONTAINED HEREIN CONFIDENTIAL AND SHALL PROTECT SAME IN THE WHOLE OR IN PART FROM DISCLOSURE AND DISSEMINATION OF ALL THIRD PARTIES AND SHALL USE SAME FOR OPERATING AND MAINTENANCE PURPOSES ONLY</small>	
 <b>RW42HORN24E WAVEGUIDE HORN ANTENNA</b>	
CAD MODEL REVISION 11	DESIGN RFPC
ASSEMBLY REVISION VS5DS	RF-LAMBDA RFPC
ASSEMBLY NAME RFLVR05	
DRAWING NUMBER D05-1	
<a href="http://www.rflambda.com">www.rflambda.com</a>	
RF-LAMBDA	SIZE LT SHEETS 1 OF 1



PAGE 1 OF 1	DATE Jun 21 <sup>st</sup> 2006
<small>PROPRIETARY INFORMATION THE INFORMATION CONTAINED IN THIS DOCUMENT IS THE PROPERTY OF RF-LAMBDA EXCEPT AS SPECIFICALLY AUTHORIZED IN WRITING BY RF-LAMBDA. THE HOLDER OF THIS DOCUMENT SHALL KEEP ALL INFORMATION CONTAINED HEREIN CONFIDENTIAL AND SHALL PROTECT SAME IN THE WHOLE OR IN PART FROM DISCLOSURE AND DISSEMINATION OF ALL THIRD PARTIES AND SHALL USE SAME FOR OPERATING AND MAINTENANCE PURPOSES ONLY</small>	DESIGN RFPC
 <b>RW42HORN24E</b> <b>WAVEGUIDE HORN</b> <b>ANTENNA</b>	RF-LAMBDA RFPC
	CAD MODEL REVISION 11
	ASSEMBLY REVISION VS5DS
	ASSEMBLY NAME RFLVR05
<a href="http://www.rflambda.com">www.rflambda.com</a>	DRAWING NUMBER D05-1
<b>RF-LAMBDA</b>	SIZE LT SHEETS 1 OF 1