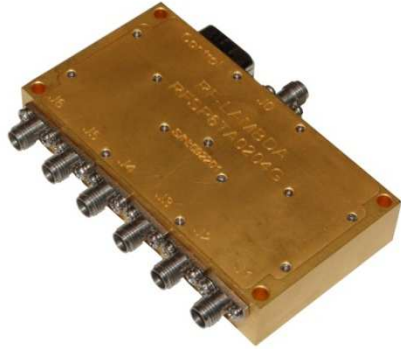




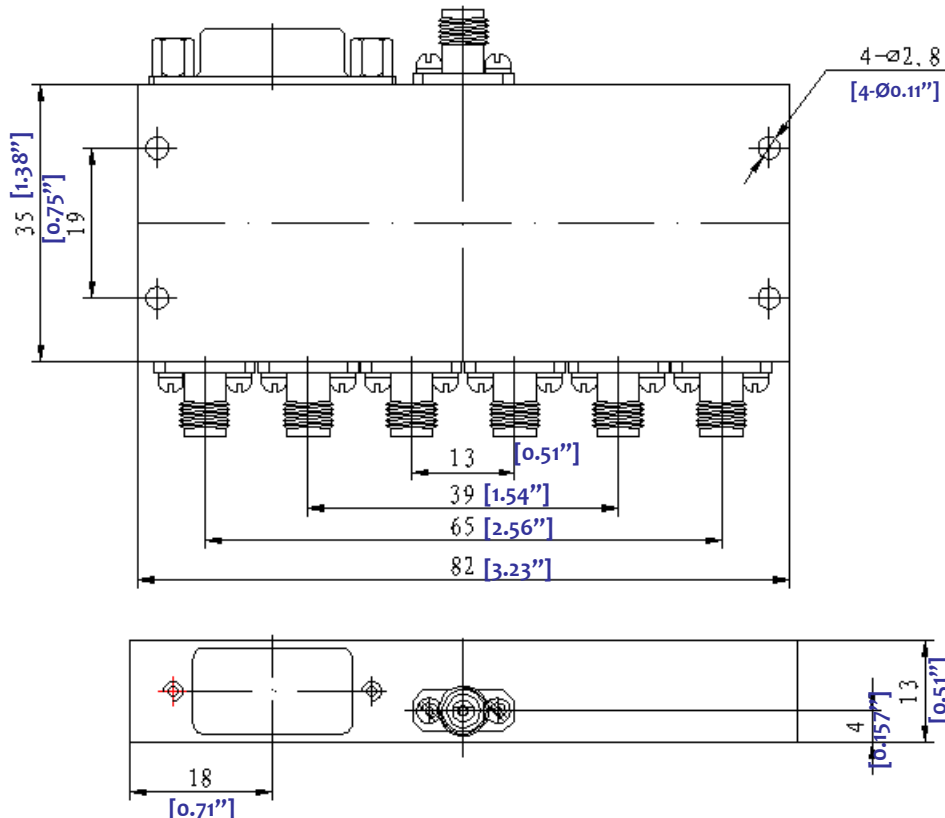
Absorptive and Reflective 2-4GHz Coaxial SP6T



Features

- Wide Band Operation 2-4GHz
- High Power Handle Capability up to 50W upon request.
- TTL compatible driver include
- Fast Switching Speed
- Low Insertion Loss and High Isolation
- Temperature Range -40°C~+85°C
- Customization available upon request

Absorptive SP6T- Single Pole Single Throw						
Part Number	Frequency (GHz)	Insert. Loss (dB)	VSWR (Max:1)	Isolation min (dB)	Power (Watts)	Switching Speed (ns)
RFSP6TA0204G	2-4	2.0	1.5	80	0.2W~1W	50~100
Reflective SP6T- Single Pole Single Throw						
Part Number	Frequency (GHz)	Insert. Loss (dB)	VSWR (Max:1)	Isolation min (dB)	Power (Watts)	Switching Speed (ns)
RFSP6TR0204G	2-4	1.6	1.5	80	0.5~50	100~500



①. +5V ②. -5V ③. GND ④. C1 ⑤. C2 ⑥. C3
⑦. ⑧. ⑨.GND

C3	C2	C1	
0	0	0	J0-J1
0	0	1	J0-J2
0	1	0	J0-J3
0	1	1	J0-J4
1	0	0	J0-J5
1	0	1	J0-J6

switching speed, higher power handle, higher isolation

1.Higher power handle capability will give lower isolation , higher biasing current and slower switching speed.

2.Narrower frequency band will improve insertion loss and isolation.

3. Biasing:
-5V(Max, 70mA Typical 30mA)
+5V(Max, 350mA Typical 250mA)

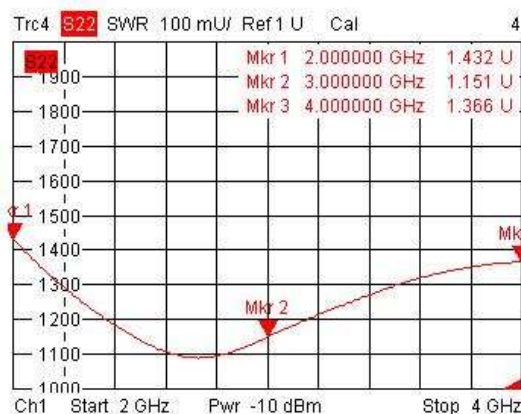
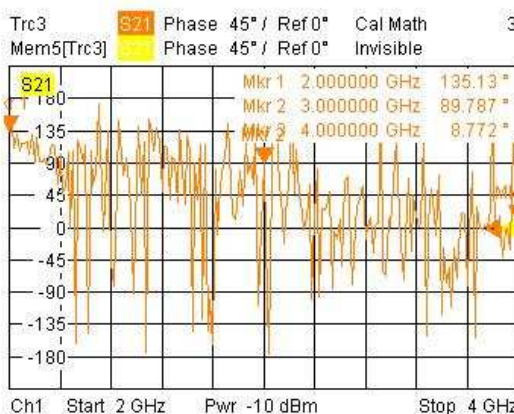
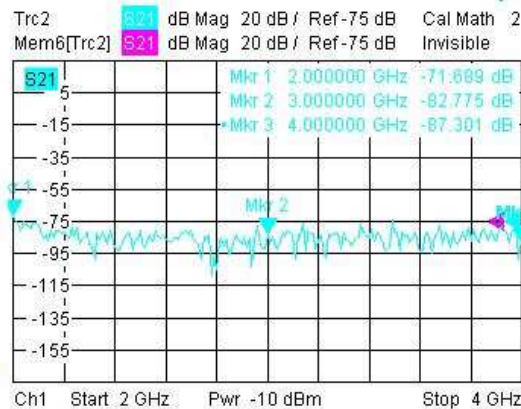
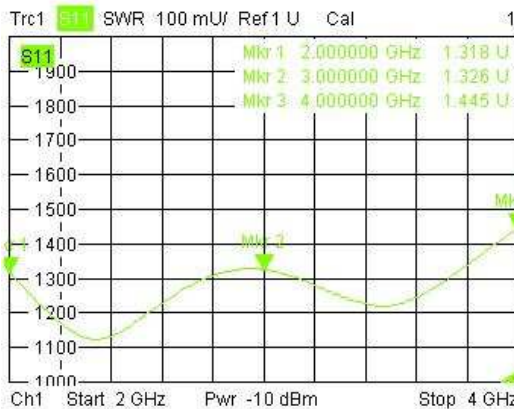
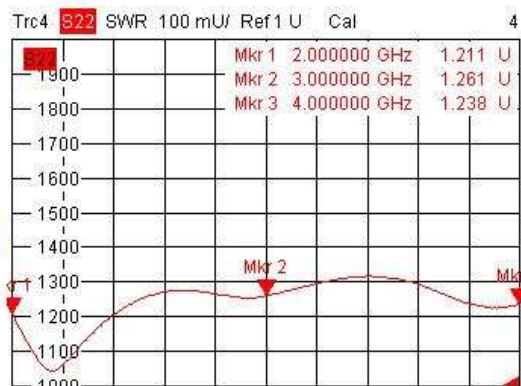
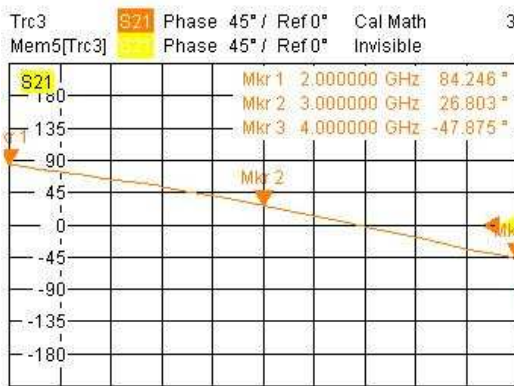
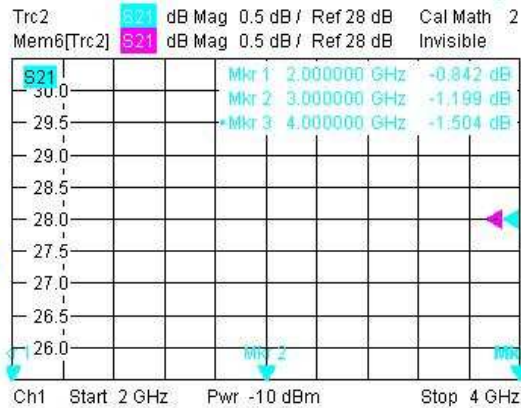
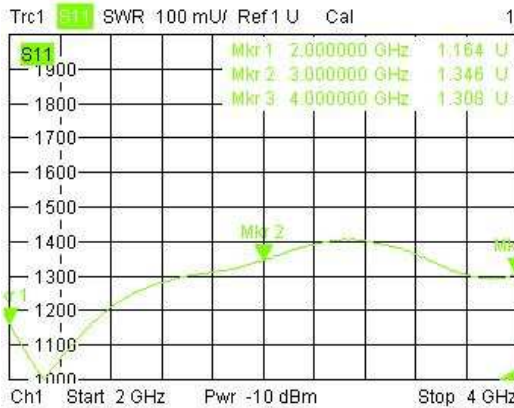


RF-LAMBDA

The power beyond expectations

2-4GHz PIN SP6T

Absorptive / Reflective Coaxial Single Pole Six Throw Switch 2-4GHz



7/13/2009, 6:33 AM