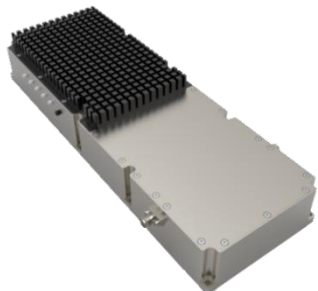


Wideband Solid State Power Amplifier 30GHz ~ 65GHz



Note: The photo is for illustration purposes only.
Please refer to the outline drawing

Features

- Gain: 38dB typical
- Output power +33dBm typical
- Supply Voltage: +28V

Typical Applications

- Wireless Infrastructure
- Military & Aerospace
- Test and Measurement

Wideband Solid State Power Amplifier 30GHz~65GHz

Electrical Specifications, TA = +25°C, Vcc = +28V

Parameter	Min.	Typ.	Max.	Units
Frequency Range	30		65	GHz
Gain		38		dB
Gain Flatness		±5.0		dB
Gain Variation Over Temperature (-40°C~+85°C)		±3		dB
Noise Figure		/		dB
Input VSWR		2.5		: 1
Output 1dB Compression Point (P1dB)				dBm
Saturated Output Power (Psat)		33		dBm
IM3				dBc
Isolation S12		-55		dB
Supply Current (Vcc=+28V)		1.2	1.6	A
Net weight				ounces
Weight (Including Heat sink)				ounces
Impedance		50		Ohms
Input / Output Connectors		1.85mm-Female		
Finish		Nickel Plated		
Material		Aluminum / Copper		
Package Sealing		Epoxy Sealed (Standard)		
		Hermetically Sealed (Optional)		

Absolute Maximum Ratings

Operating Voltage	+30V
RF Input Power	+3dBm

Biasing Up Procedure

Step 1	Connect Ground Pin
Step 2	Connect input and output
Step 3	Connect +28V biasing
Power OFF Procedure	
Step 1	Turn off +28V biasing
Step 2	Remove RF connection
Step 3	Remove Ground.

Environmental Specifications and Test Standards

Parameter	Description
Operational Temperature	-40°C~+85°C (Case Temperature)
Storage Temperature	-50°C~+105°C
Thermal Shock	-40°C → +85°C (5 Cycles / 10 hours)
Random Vibration	MIL-STD-202G Table 214-I, Test Condition Letter C 1.5 Hours Per Axis
High Temperature Burn In	Temperature +85°C for 72 Hours
Shock	1. Weight >20g, 50g half sine wave for 11ms, Speed variation 3.44m/s 2. Weight <=20g, 100g Half sine wave for 6ms, Speed variation 3.75m/s 3. Total 18 times (6 directions, 3 repetitions per direction).
Altitude	Standard: 30,000 Ft (Epoxy Sealed Controlled Environment) Optional: Hermetically Sealed (60,000 ft. 1.0 PSI min)
Hermetically Sealed (Optional)	MIL-STD-883 (For Hermetically Sealed Units)

Ordering Information

Part No.	Description
RFLUPA30G65GF	30-65GHz Power Amplifier

Amplifier Use

Ensure that the amplifier input and output ports are safely terminated into a proper 50 ohm load before turning on the power. Never operate the amplifier without a load. A proper 50 ohm load is defined as a load with impedance less than 1.9:1 or return loss larger than 10dB relative to 50 Ohm within the specified operating band width.

Power Supply Requirements

Power supply must be able to provide adequate current for the amplifier. Power supply should be able to provide 1.5 times the typical current or 1.2 times the maximum current (whichever is greater).

In most cases, RF - Lambda amplifiers will withstand severe mismatches without damage. However, operation with poor loads is discouraged. If prolonged operation with poor or unknown loads is expected, an external device such as an isolator or circulator should be used to protect the amplifier.

Ensure that the power is off when connecting or disconnecting the input or output of the amp.

Prevent overdriving the amplifier. Do not exceed the recommended input power level.

Adequate heat-sinking required for RF amplifier modules. Please inquire.

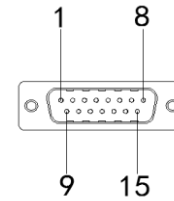
Amplifiers do not contain Thermal protection, Reverse DC polarity or Over voltage protection with the exception of a few models. Please inquire.

Proper electrostatic discharge (ESD) precautions are recommended to avoid performance degradation or loss of functionality.

What is not covered with warranty?

Each RF - Lambda amplifier will go through power and temperature stress testing. Since the die, ICs or MMICs are fragile, these are not covered by warranty. Any damage to these will NOT be free to repair.

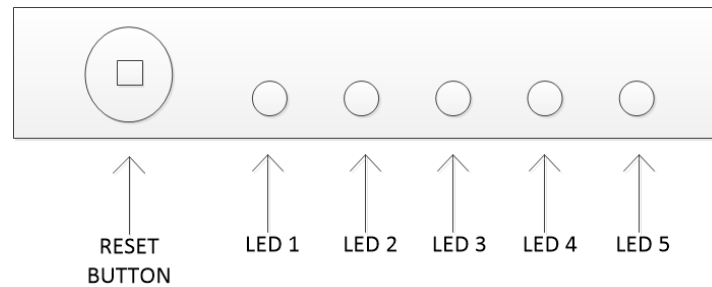
User Control Connector (Rear Panel)



Pin #	Name	Function	Initial State	Description	Applied
1	Reset	Control		Resets PA when logic <u>LOW</u> is applied and released	Yes
2	Driver Disable	Control	LOW	Applying logic <u>HIGH</u> disables driver of amplifiers	Yes
3	Drain Disable	Control	LOW	Applying logic <u>HIGH</u> disables drain of amplifiers	Yes
4	RF IN Over	Indicator	LOW	Pin will be latched to logic <u>HIGH</u> when input signal is over limit	No
5	Temp Over	Indicator	LOW	Pin will be latched to logic <u>HIGH</u> when amplifier is driven over temperature	Yes
6	Current Over	Indicator	LOW	Pin will be latched to logic <u>HIGH</u> when drain current limit is reached	Yes
7	+28V	Power Supply	+28V	+28V DC is supply Voltage	Yes
8	+28V	Power Supply	+28V	+28V DC is supply Voltage	Yes
9	VSWR	Indicator	LOW	Pin will be latched to logic <u>HIGH</u> when output reflection is over limit	No
10	+5V	Power Supply	+5V	+5V DC is supplied for reference	Yes
11	GND	Ground	GND	Ground	No
12	GND	Ground	GND	Ground	Yes
13	GND	Ground	GND	Ground	Yes
14	ID Imbalance	Indicator	LOW	Pin will be latched to logic <u>HIGH</u> when an imbalance in the drain current of the combining branches occurs	Yes
15	Temp Signal	Indicator		PA carrier case temperature is represented by voltage	Yes

HIGH/LOW voltages are standard TTL signals:
0.0V-0.8V = LOW
2V-5V = HIGH

Protection Connector Table:

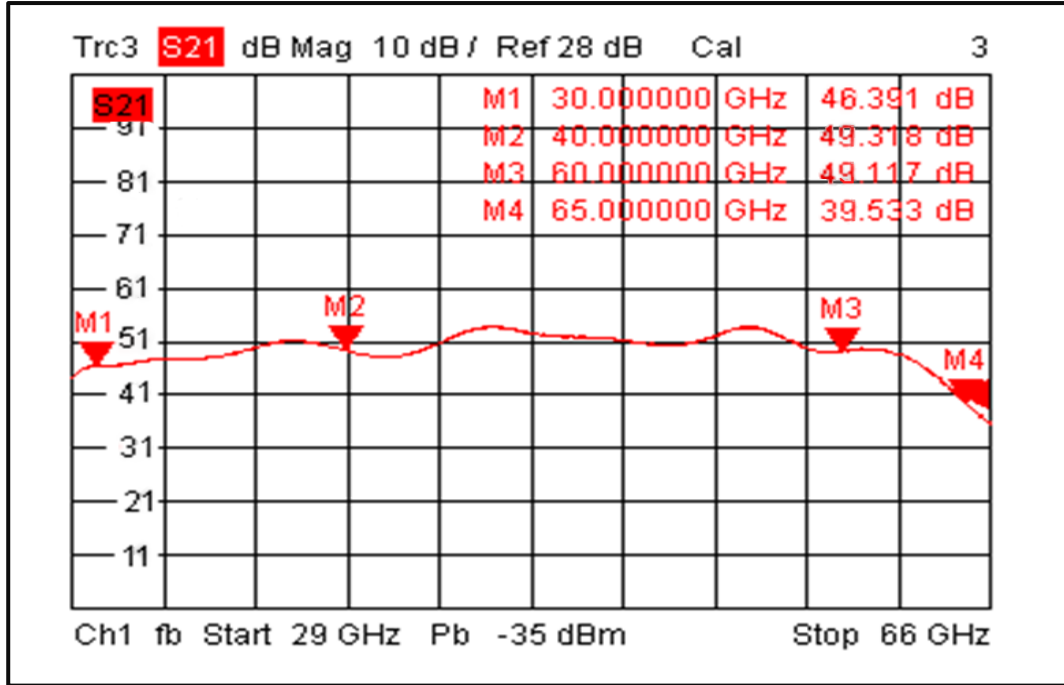


	Name	Function	Initial State	Description	Applied
	RESET	Control		Manual reset button to reset PA	Yes
LED 1	POWER	Indicator	RED Color	LED will light to <u>RED</u> color when supply power is applied	Yes
LED 2	RF IN	Indicator	GREEN Color	PA will shut down and latch this LED to a <u>RED</u> color when input signal is over limit *	No
LED 3	VSWR	Indicator	GREEN Color	PA will shut down and latch this LED to a <u>RED</u> color when output reflection is over limit *	No
LED 4	TEMP	Indicator	GREEN Color	PA will shut down and latch this LED to a <u>RED</u> color when driven over temperature *	No
LED 5	ID	Indicator	GREEN Color	PA will shut down and latch this LED to a <u>RED</u> color when an imbalance in the drain current of the combining branches occurs OR if a drain current limit is reached *	Yes

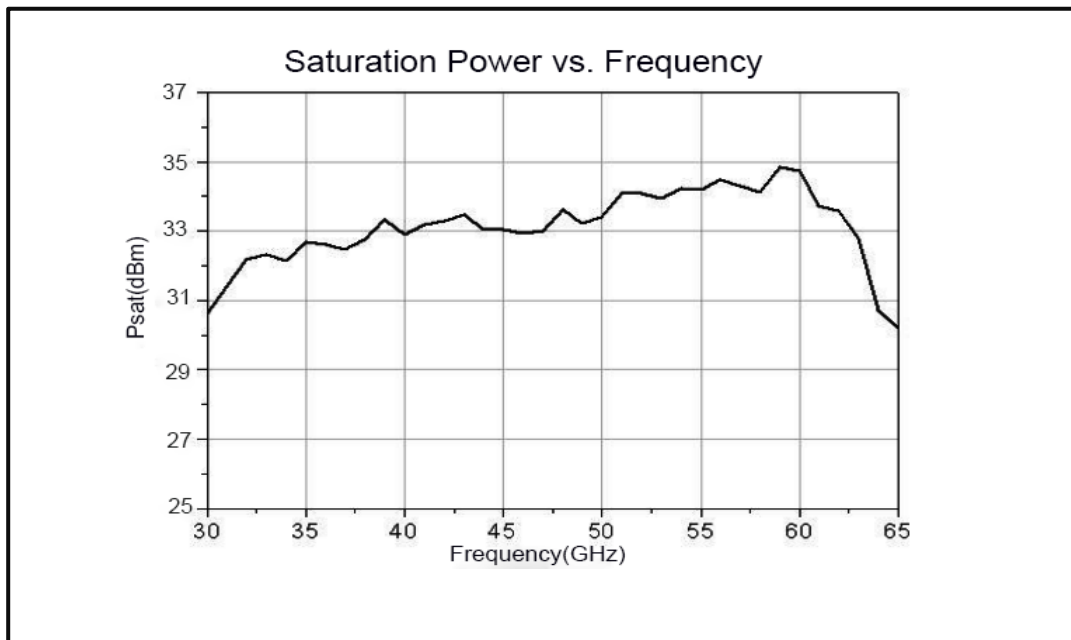
HIGH / LOW voltages are standard TTL signals:
0.0V-0.8V = LOW
2V-5V = HIGH

Typical Performance Plots

Gain@+25°C



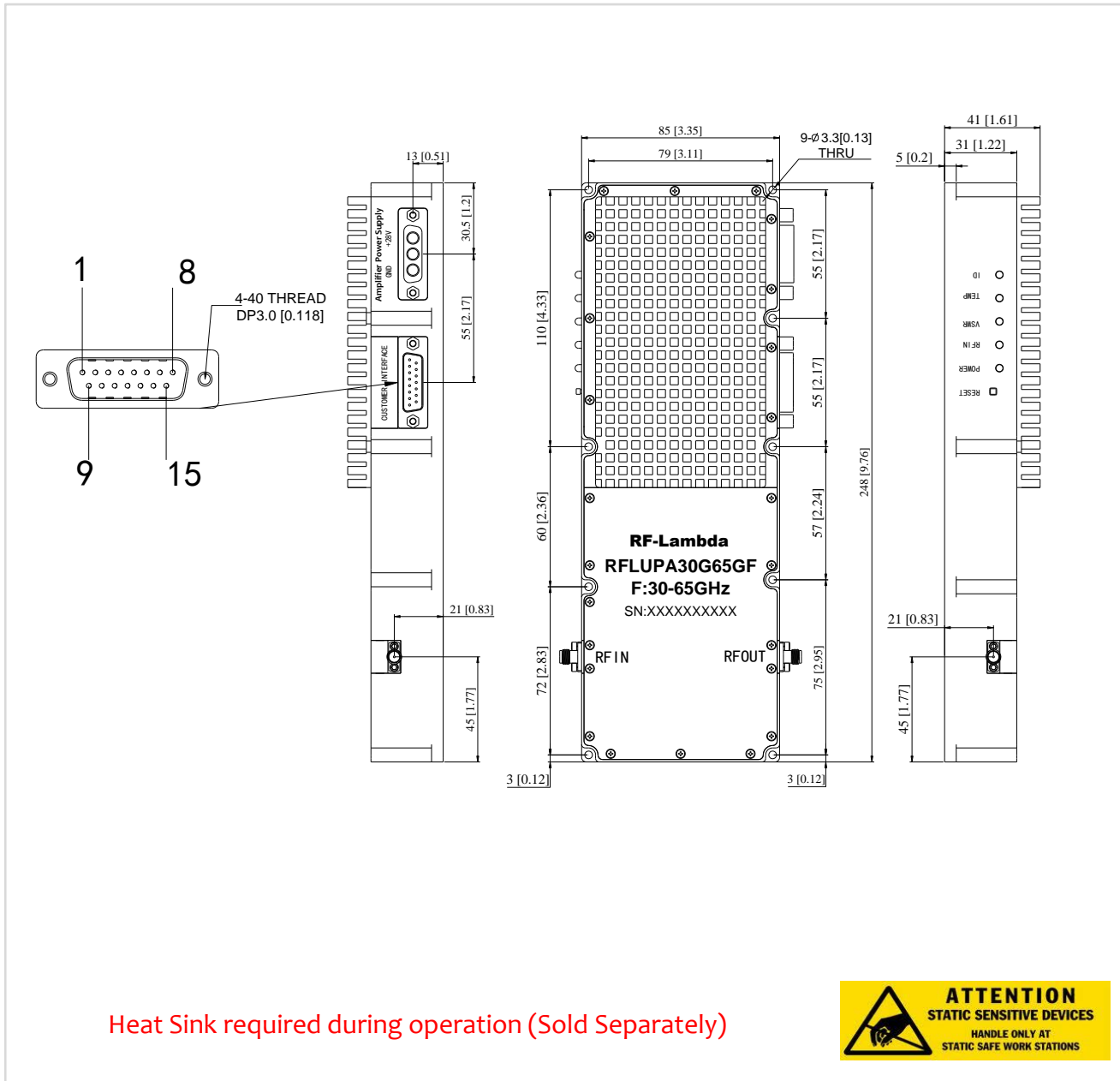
Saturation Power vs. Frequency



Wideband Solid State Power Amplifier 30GHz~65GHz

Outline Drawing:

All Dimensions in mm [inches]



Wideband Solid State Power Amplifier 30GHz~65GHz

Important Notice

The information contained herein is believed to be reliable. RF-Lambda makes no warranties regarding the information contained herein. RF-Lambda assumes no responsibility or liability whatsoever for any of the information contained herein. RF-Lambda assumes no responsibility or liability whatsoever for the use of the information contained herein. The information contained herein is provided "AS IS, WHERE IS" and with all faults, and the entire risk associated with such information is entirely with the user. All information contained herein is subject to change without notice. Customers should obtain and verify the latest relevant information before placing orders for RF-Lambda products. The information contained herein or any use of such information does not grant, explicitly or implicitly, to any party any patent rights, licenses, or any other intellectual property rights, whether with regard to such information itself or anything described by such information. RF-Lambda products are not warranted or authorized for use as critical components in medical, life-saving, or life sustaining applications, or other applications where a failure would reasonably be expected to cause severe personal injury or death.