

Wide Band Power Amplifier 6GHz-12GHz



Product Description

RFLUPA06G12GD is a wideband power amplifier with a frequency range of 6 to 12GHz.

The power output of this amplifier is 50 dBm typical. The typical small signal gain is 67 dB with a flatness of ± 5 dB.

The power amplifier's input connector is SMA and output connector is N. The operating temperature of this product is within -40 to +60°C.

Features

- Wideband Power Amplifier
- Small Signal Gain 67dB Typical
- Output Saturation Power 50dBm Typical
- Supply Voltage +48VDC
- 50 Ohm Matched Input/Output
- Overcurrent Protection
- On board microprocessor driven bias controller
- -30dB output coupler applied

Typical Applications

- Wireless Infrastructure
- Military and Aerospace Applications
- Test Instrumentation
- Radar Systems
- 5G Wireless Communications
- Microwave Radio Systems
- TR Modules
- Research and Development
- Cellular Base Stations

Electrical Specifications ($T_A = +25^\circ\text{C}$)

Parameter	Min	Typ	Max	Min	Typ	Max	Units	
Frequency Range		6 – 7		8 – 12			GHz	
Small Signal Gain		70		65			dB	
Gain Flatness		± 5		± 5			dB	
Gain Variation Over Temperature (-40°C ~ +60°C)		± 3		± 3			dB	
Input Return Loss		15		15			dB	
*Saturated Output Power (Psat)		49		49			dBm	
Supply Current (+48 VDC)		6.0	16	6.0	16		A	
Input Max Power (No Damage)		Psat – Gain		Psat – Gain			dBm	
Weight			6.2				lbs.	
Impedance			50				Ohms	
Input / Output Connectors			SMA-Female(Input) / N- Female(Output)					
Package Sealing			Epoxy and Screw Tight Sealed (Standard)					
			Hermetically Sealed (Optional)					

* P1dB, P3dB and Psat power test signal: 200 μ s pulse width with 10% duty cycle.

* For average CW power testing or increased duty cycle, a 3dBm back off from Psat is required.

Absolute Maximum Ratings

Parameter	Rating
Supply Voltage Range	+60VDC
*RF Input Power (RFIN)	Psat – Large Signal Gain

Bias Up Procedure

1. Connect ground
2. Connect input and output with 50 Ohm source/load.
(In band VSWR < 1.9:1 or >10dB return loss.)
3. Connect positive supply and make sure power supply can handle max current.

Bias Down Procedure

1. Turn off power supply
2. Remove positive supply Connection
3. Remove RF Connection
4. Remove ground

Environmental Specifications and Test Standards

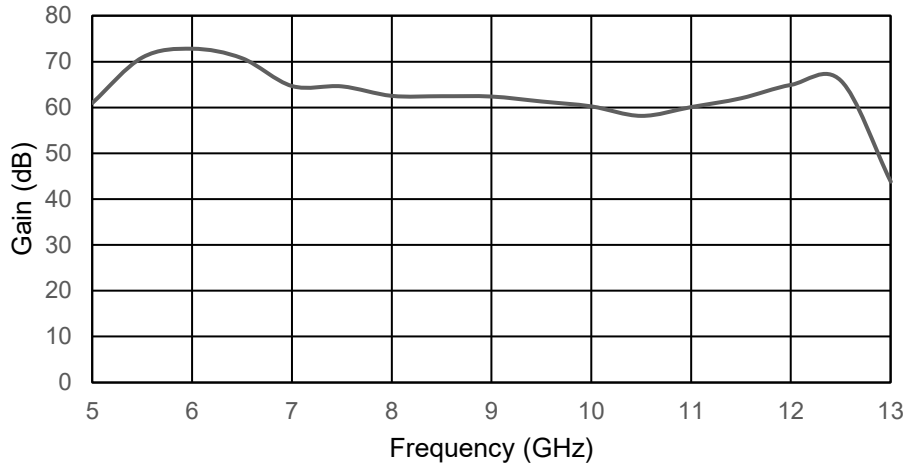
Parameter	Description
Operational Temperature	-40°C to +60°C (Case Temperature)
Storage Temperature	-55°C to +125°C
Thermal Shock	-40°C → +85°C (5 Cycles / 10 hours)
**Random Vibration	MIL-STD-202G Table 214-I, Test Condition Letter C 1.5 Hours Per Axis
High Temperature Burn In	Temperature +60°C for 72 Hours
Shock	1. Weight >20g, 50g half sine wave for 11ms, Speed variation 3.44m/s 2. Weight <=20g, 100g Half sine wave for 6ms, Speed variation 3.75m/s 3. Total 18 times (6 directions, 3 repetitions per direction).
Altitude	Standard: 30,000 Ft (Epoxy Sealed Controlled Environment) Optional: Hermetically Sealed (60,000 ft. 1.0 PSI min)
Hermetically Sealed (Optional)	MIL-STD-883 (For Hermetically Sealed Units)

*Maximum RF input power is set to assure safety of amplifier. Input power may be increased at own risk to achieve full power of amplifier. Please reference gain and power curves.

**For vibration testing details please see additional information section.

Typical Performance Plots

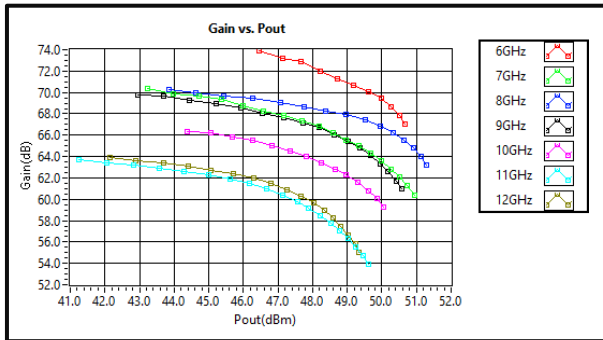
Gain vs. Frequency



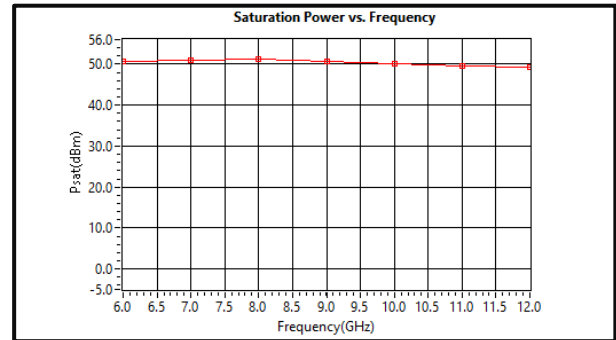
Note: Small signal VNA measurements include attenuators to protect equipment

Typical Performance Plots

Gain vs. Output Power

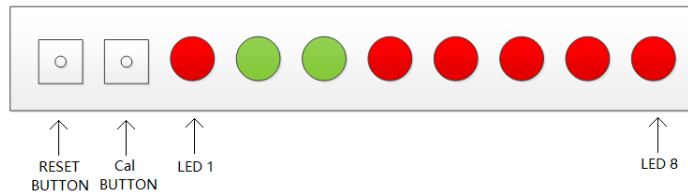


Psat dB vs. Frequency



Note: Input/Output return loss measurements include attenuators to protect equipment

Alarm Status Panel



LED#	Name	Function	Initial State	Description	Applied
	RESET	Control		Manual reset button to reset PA	Yes
	Calibration	Control		Manual calibration button to start calibrating the PA when CAL alarm LED is RED	Yes
1	POWER	Indicator	RED Color	LED will light to RED color when supply power is applied	Yes
2	Pout	Indicator	RED Color	LED will light to GREEN color when RF output power is ON	Yes
3	System Initialing	Indicator	GREEN Color	LED will blink while boosting the system.	Yes
4	RF IN	Indicator	GREEN Color	PA will shut down and latch this LED to a RED color when input signal is over limit *	Yes
5	VSWR	Indicator	GREEN Color	PA will shut down and latch this LED to a RED color when output reflection is over limit *	Yes
6	ID	Indicator	GREEN Color	PA will shut down and latch this LED to a RED color when an imbalance in the drain current of the combining branches occurs or if a drain current limit is reached *	Yes
7	TEMP	Indicator	GREEN Color	PA will shut down and latch this LED to a RED color when driven over temperature *	Yes
8	CAL	Indicator	GREEN Color	PA will shut down and latch this LED to a RED color if calibration needed while boosting the system *	Yes

*LED needs to be manually reset to initial state by pressing RESET button

Protection Connector Table

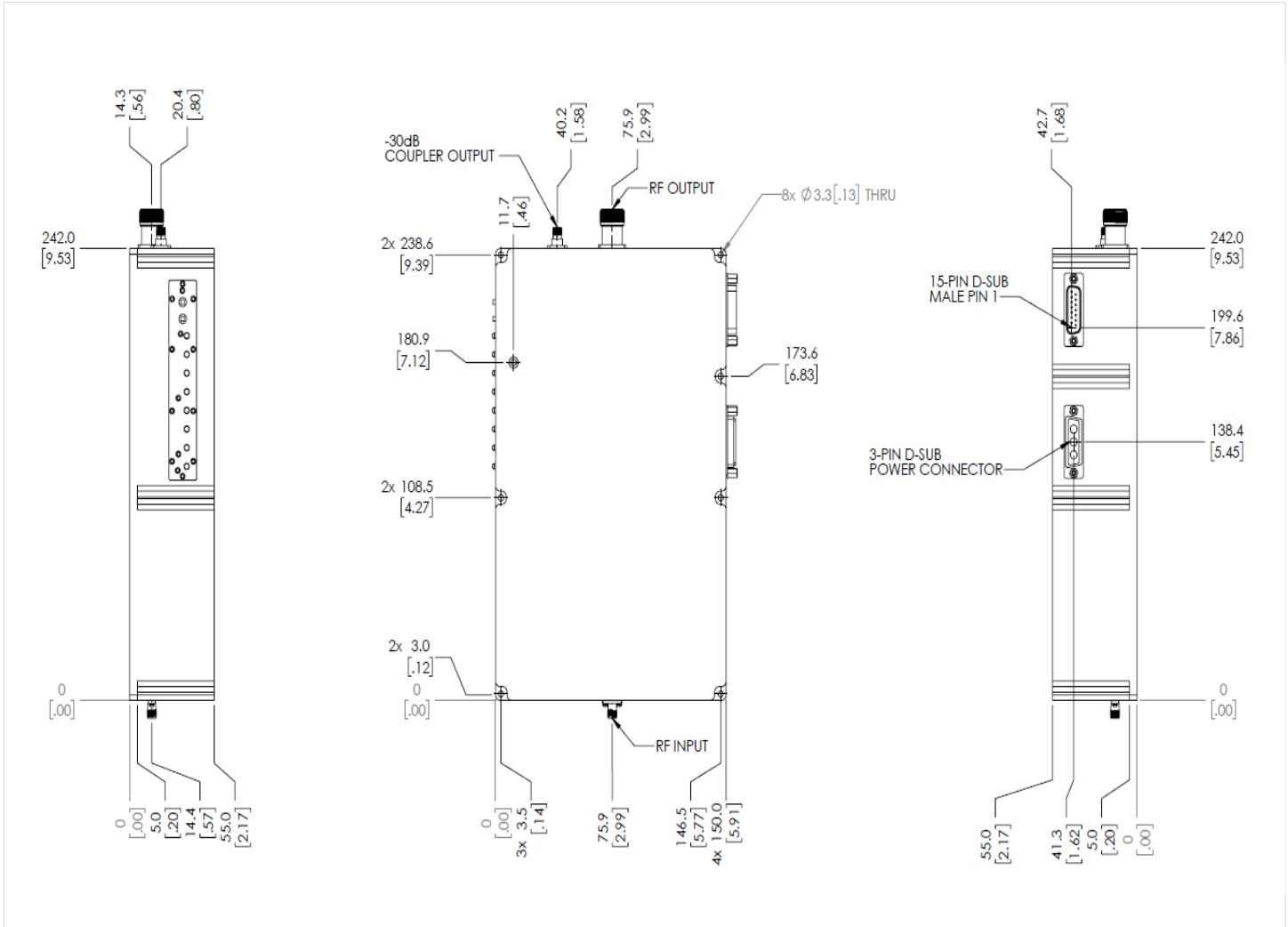
Female D-Sub connector is on the housing
The mating male part is provided within shipment

Pin #	Name	Function	Initial State	Description	Applied
1	Reset	Control		Resets PA when logic <u>LOW</u> is applied and released	Yes
2	Driver Disable	Control	LOW	Applying logic <u>HIGH</u> disables driver of amplifiers	Yes
3	Drian Disable	Control	LOW	Applying logic <u>HIGH</u> disables drain of amplifiers	Yes
4	RF IN Over	Indicator	LOW	Pin will be latched to logic <u>HIGH</u> when input signal is over limit	Yes
5	Temp Over	Indicator	LOW	Pin will be latched to logic <u>HIGH</u> when amplifier is driven over temperature	Yes
6	Current Over	Indicator	LOW	Pin will be latched to logic <u>HIGH</u> when drain current limit is reached	Yes
7	ID Imbalance	Indicator	LOW	Pin will be latched to logic <u>HIGH</u> when an imbalance in the drain current of the combining branches occurs	Yes
8	PA OFF	Indicator	LOW	Pin will be latched to logic <u>HIGH</u> when any protection triggers	Yes
9	PA output power	Indicator	LOW	PA output power is represented by voltage	No
10	Calibration	Control		Applying logic <u>LOW</u> to start amplifier calibration*	Yes
11	VSWR	Indicator	LOW	Pin will be latched to logic <u>HIGH</u> when output reflection is over limit	Yes
12	GND	Ground	GND	Ground	Yes
13	+5V	Power Supply	+5V	+5V DC is supplied for reference	Yes
14	GND	Ground	GND	Ground	Yes
15	Not Connected	NC	NC	NC	Yes

Notes:

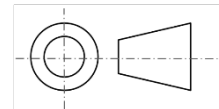
- HIGH/LOW voltages are standard TTL signals 0.0V-0.8V = LOW. 2V-5V = HIGH. Input current is 10uA.
- Matching connector and cable will be shipped with the product.
- Applied=Yes means the feature is included. Applied=No means the feature is not included with this model.
- 5V reference supply can source 700mA.
- Indicator output signals can source 24mA.
- Calibration. During calibration process, RF output must be terminated. RF input signal must be OFF.

Outline Drawing



Notes:

1. Package Material: Aluminum and Copper
2. Plating: Nickel
3. All dimensions are in millimeters [inches].
4. Tolerances ± 0.25 [0.010] unless otherwise specified.
5. Heat sink required during operation (sold separately). Matching heatsink is listed on our website. If customer would like to use their own cooling method, please make sure the amplifier will operate under the specs that listed in page 2 of this datasheet.



Additional Information

Documentation	Webpage
ESD Policy	https://rflambda.com/pdf/rflambda_esd_control.pdf
Heatsink Lookup Specifications	https://rflambda.com/search_heatsink.jsp
Connector Torque Specifications	https://www.rflambda.com/pdf/Torque_Specifications.pdf
Random Vibration Test Standard	https://www.rflambda.com/pdf/rflambda_random_vibration_MIL-STD-202G.pdf

Ordering Information

Part Number	Modification	Description
RFLUPA06G12GD	Input connector SMA-Female and Output connector N-Female	6GHz-12GHz Power Amplifier

Amplifier Use

Ensure that the amplifier input and output ports are safely terminated into a proper 50 ohm load before turning on the power. Never operate the amplifier without a load. A proper 50 ohm load is defined as a load with impedance less than 1.9:1 or return loss larger than 10dB relative to 50 Ohm within the specified operating band width.

Power Supply Requirements

Power supply must be able to provide adequate current for the amplifier. Power supply should be able to provide 1.5 times the typical current or 1.2 times the maximum current (whichever is greater).

In most cases, RF - Lambda amplifiers will withstand severe mismatches without damage. However, operation with poor loads is discouraged. If prolonged operation with poor or unknown loads is expected, an external device such as an isolator or circulator should be used to protect the amplifier.

Ensure that the power is off when connecting or disconnecting the input or output of the amp.

Prevent overdriving the amplifier. Do not exceed the recommended input power level.

Adequate heat-sinking required for RF amplifier modules. Please inquire.

Amplifiers do not contain Thermal protection, Reverse DC polarity or Over voltage protection with the exception of a few models. Please inquire.

Proper electrostatic discharge (ESD) precautions are recommended to avoid performance degradation or loss of functionality.

What is not covered with warranty?

Each RF - Lambda amplifier will go through power and temperature stress testing. Since the die, ICs or MMICs are fragile, these are not covered by warranty. Any damage to these will NOT be free to repair.

Important Notice

The information contained herein is believed to be reliable. RF-Lambda makes no warranties regarding the information contained herein. RF-Lambda assumes no responsibility or liability whatsoever for any of the information contained herein. RF-Lambda assumes no responsibility or liability whatsoever for the use of the information contained herein. The information contained herein is provided "AS IS, WHERE IS" and with all faults, and the entire risk associated with such information is entirely with the user. All information contained herein is subject to change without notice. Customers should obtain and verify the latest relevant information before placing orders for RF-Lambda products. The information contained herein or any use of such information does not grant, explicitly or implicitly, to any party any patent rights, licenses, or any other intellectual property rights, whether with regard to such information itself or anything described by such information.

RF-Lambda products are not warranted or authorized for use as critical components in medical, life-saving, or life sustaining applications, or other applications where a failure would reasonably be expected to cause severe personal injury or death.