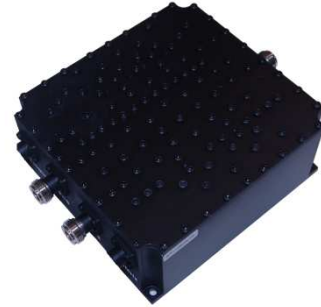




5 CHANNELS CAVITY MULTIPLEXER

Channel1: 698-806MHz
1710~1755/2110~2155MHz
Channel2 : 824-894MHz
1850~1990MHz



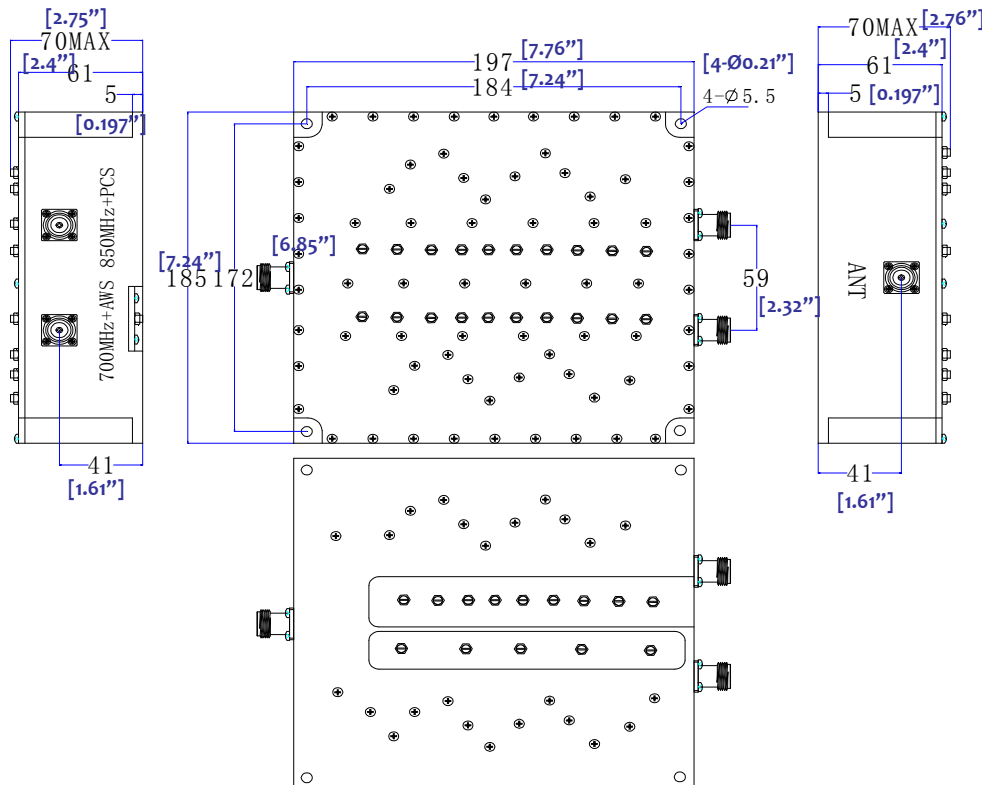
Electrical Specification:

Frequency Range:

Channel1: 698-806MHz
 1710~1755/2110~2155MHz
Channel3: 1850~2000MHz
 1850~1990MHz

Insertion Loss: 0.5dB max
Power Handle: 50W
Isolation between port: 45dB
Band To Band Isolation: 45dB
Return loss: -20dB
Passive Intermodulation: -140dBc

- Compact size and high power handle
- Very high rejection outdoor unit
- Compatible with ITU Standard
- N-Female and SMA-F connector available upon request
- Storage temperature -40~+85C
- Operational Temperature: -25~+65C
- Operating Humidity: 0~90% relative



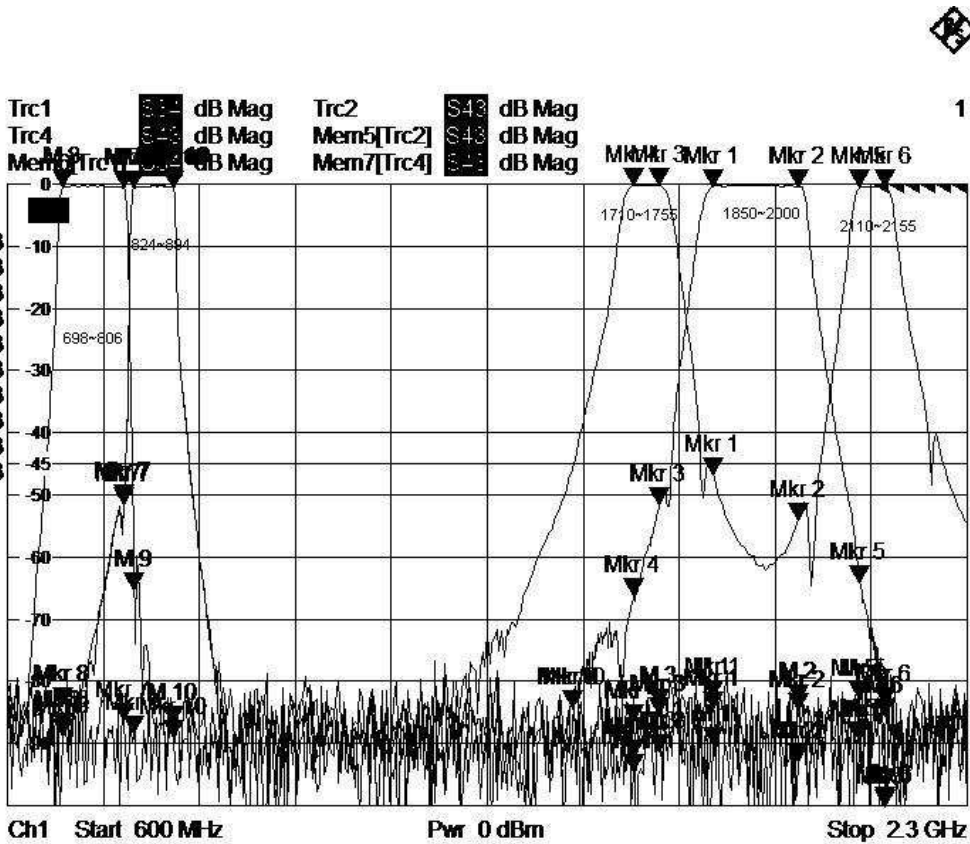
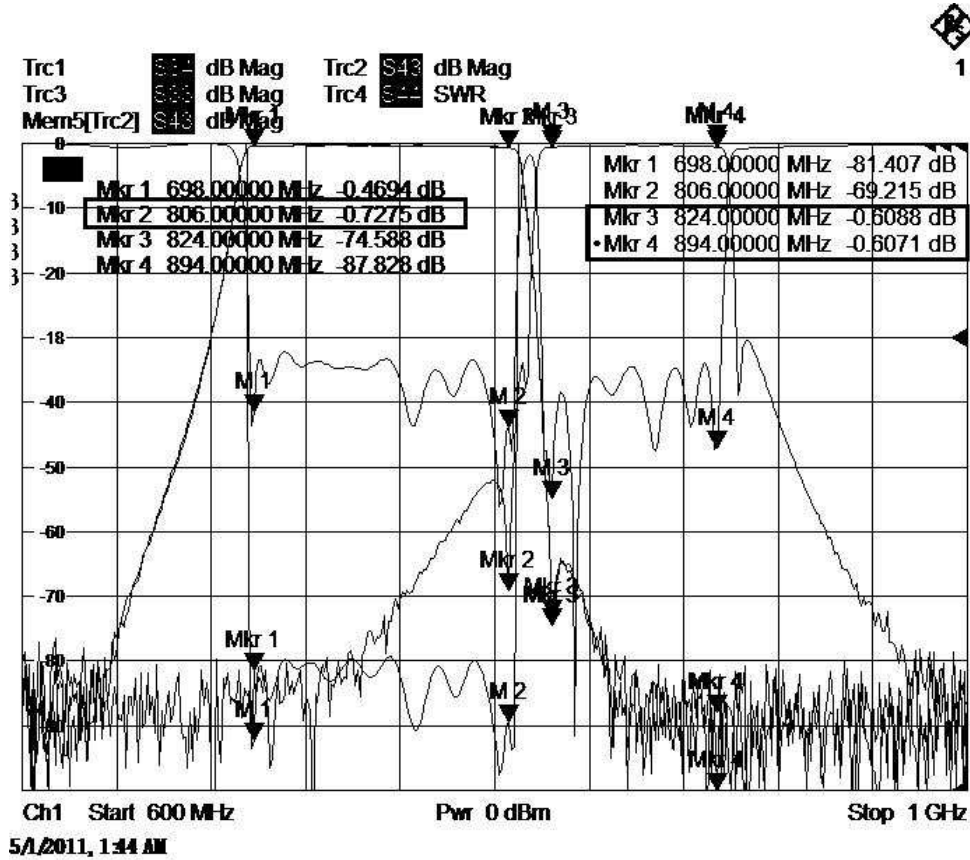
50W HIGH POWER 5 CHANNELS CAVITY MULTIPLEXER



RF-LAMBDA

The power beyond expectations

RFMU700M1990



50W HIGH POWER 2 CHANNELS CAVITY MULTIPLIER

