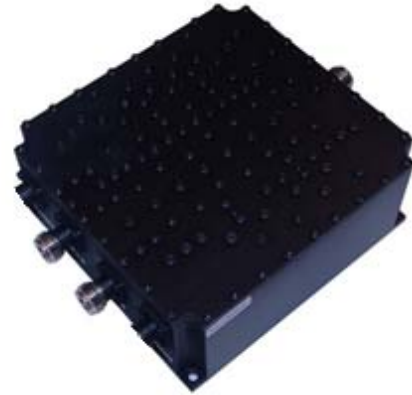




2 CHANNELS CAVITY MULTIPLEXER

Channel1: **700MHZ& AWS**
 698-787MHz
 1710-1755MHz
 2110-2155MHz

Channel2: **CELL& PCS**
 824-894MHz
 1850-1995MHz

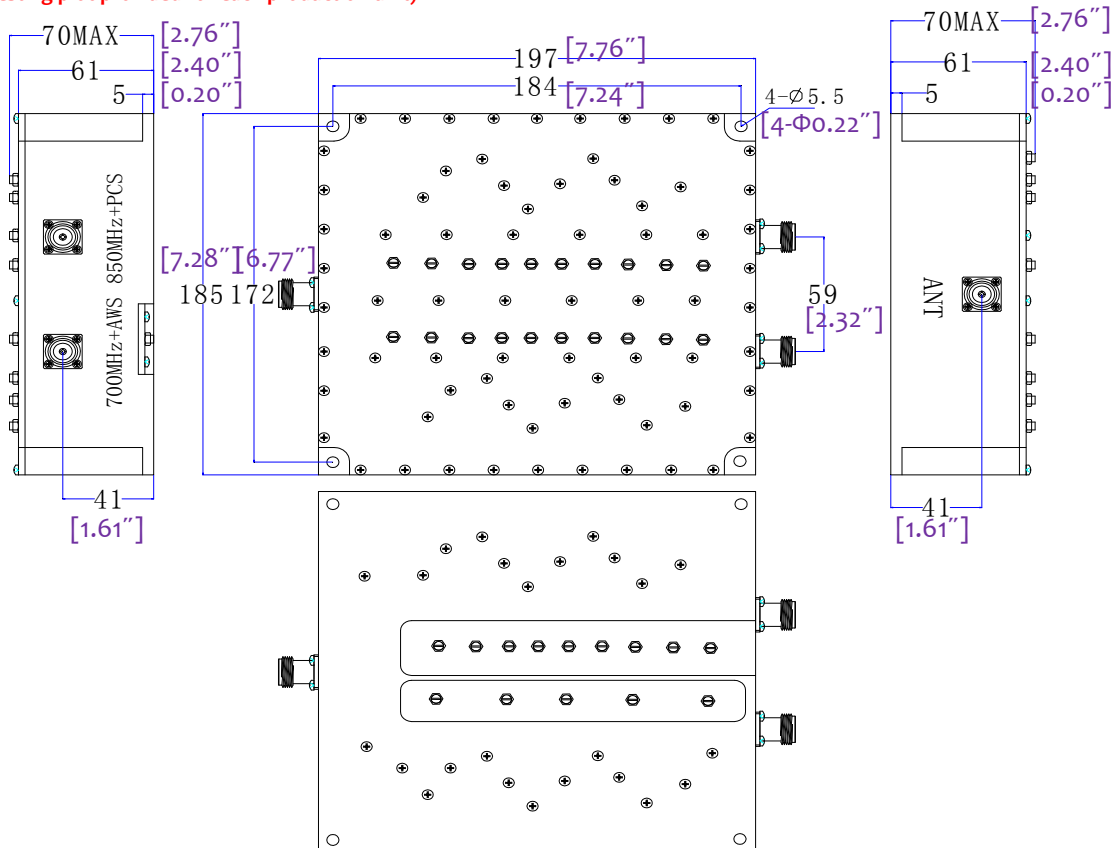


Electrical Specification:

Insertion Loss: 1.0dB max
 Pass band Ripple: 0.4dB max
 Power Handle: 80W
 Isolation between port: 45dB min
 Isolation between band: 45dB min
 Return loss: 15dB min

- Compact size and high power handle
- Very high rejection outdoor unit
- Compatible with ITU Standard
- N-Female and SMA-F connector available upon request
- Storage temperature -40~+85C
- Operational Temperature: -25~+70C
- Operating Humidity: 0~90% relative

PIM: (Optional) -150dBc typical, -145dBc min
 (PIM Testing plot provided for each production unit)



HIGH POWER 2 CHANNELS CAVITY MULTIPLEXER



RF-LAMBDA

The power beyond expectations

RFDU700M1990

HIGH POWER 2 CHANNELS CAVITY MULTIPLEXER

