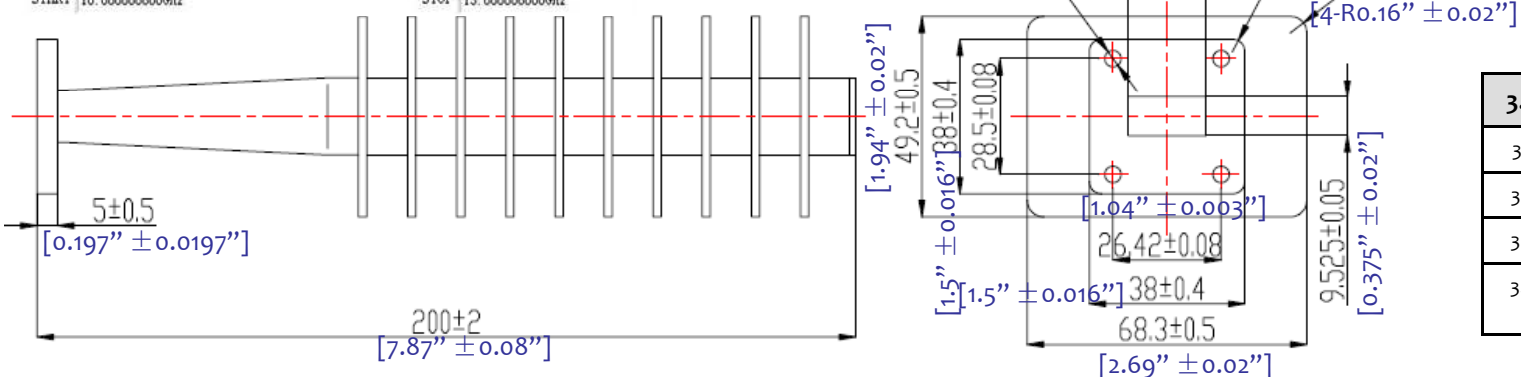
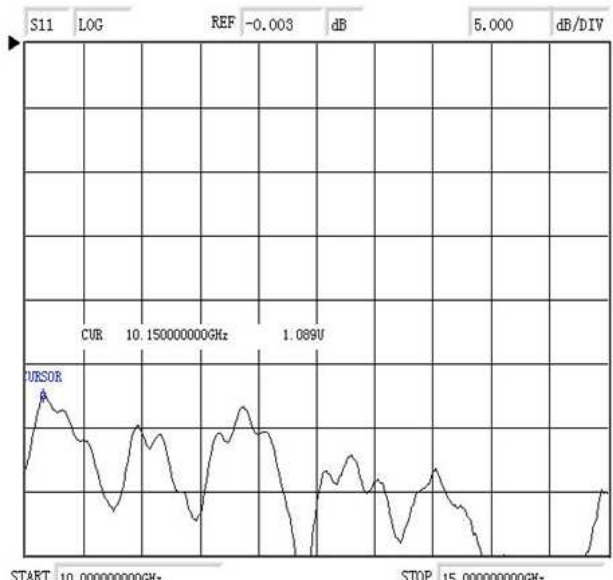
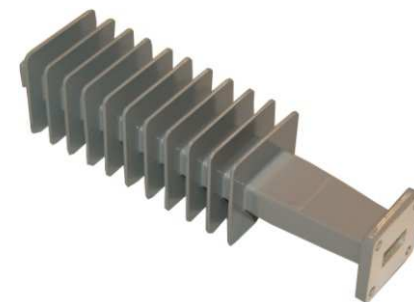


WAVEGUIDE 200W HIGH POWER TERMINATION - RFWT75F



3.0 Electrical Specifications	
3.1	Frequency Range 10.0 ~ 15.0GHz
3.2	Average Power 200W (CW)
3.3	Peak Power 20KW
3.4	VSWR 1.10:1 (type.) 1.15:1 (max)

1.0 Mechanical Specifications	
1.1	Waveguide type Rectangular Waveguide WR75
1.2	Flange type CPRG, CPRF, COVER, CHOKE available
1.3	Flange Holes Through
1.4	Basis-material Aluminum, Brass, Alloyed Cuprum, Stainless
1.5	Internal Body Finish Silver Plated chromate or conversion
1.6	External Body Finish Body painted with gray/black epoxy enamel

2.0 Environment specifications	
2.1	Operation Temp. -40°C~+85°C
2.2	Storage Temp. -50°C~+125°C
2.3	Altitude 45000 ft
2.4	Vibration 10g rms (15 degree 2KHz)
2.5	Humidity 100% RH at 35°C, 95%RH at 40 deg c
2.6	Shock 20G for 11msc

PAGE 1 OF 1		DATE Jun 21 st 2006
<p>RFWT75F WAVEGUIDE TERMINATION</p> <p>www.rflambda.com</p>		DESIGN RFPC
		RF-LAMBDA RFLVR05
		CAD MODEL REVISION 11
		ASSEMBLY REVISION V55D5
<p>PROPRIETARY INFORMATION THE INFORMATION CONTAINED IN THIS DOCUMENT IS THE PROPERTY OF RF-LAMBDA EXCEPT AS SPECIFICALLY AUTHORIZED IN WRITING BY RF-LAMBDA. THE HOLDER OF THIS DOCUMENT SHALL KEEP ALL INFORMATION CONTAINED HEREIN CONFIDENTIAL AND SHALL PROTECT SAME IN THE WHOLE OR IN PART FROM DISCLOSURE AND DISSEMINATION OF ALL THIRD PARTIES AND SHALL USE SAME FOR OPERATING AND MAINTENANCE PURPOSES ONLY</p>		ASSEMBLY NAME RFLVR05
<p>www.rflambda.com</p>		DRAWING NUMBER D05-1
<p>RF-LAMBDA</p>		SIZE LT SHEETS 1 OF 1