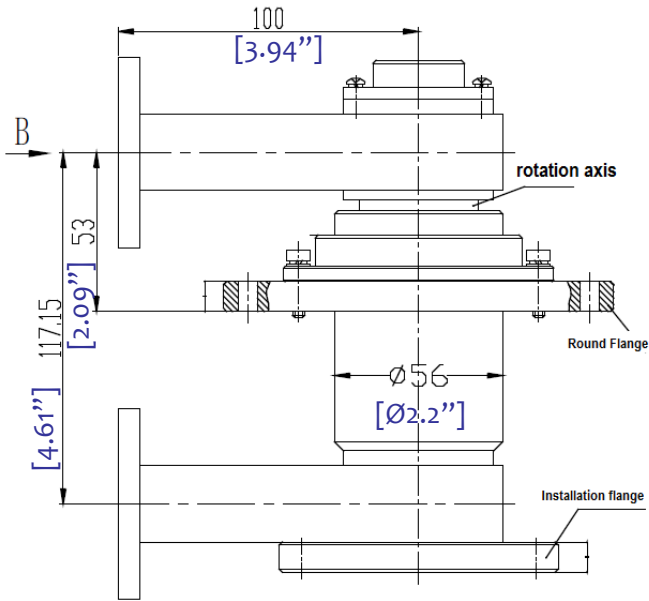
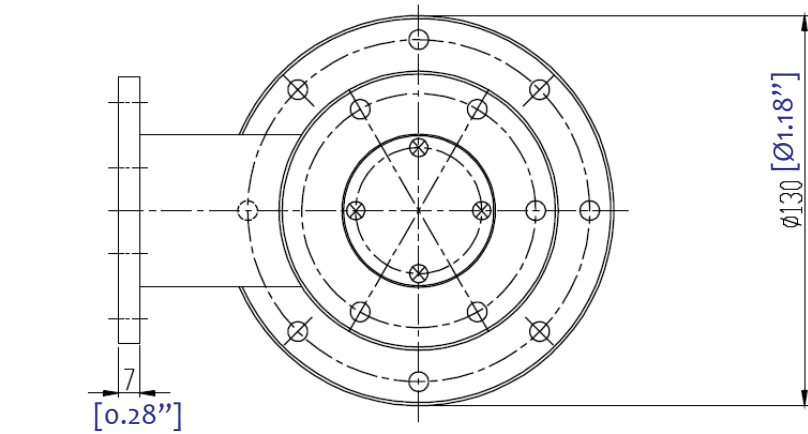


HIGH POWER WR187 WAVEGUIDE “U” SHAPE SINGLE CHANNEL ROTARY JOINT --- RFWRJ187SU



1.0 Mechanical Specifications		
1.1	Waveguide type	Rectangular Waveguide WR187
1.2	Flange type	CPRF FLAT (Other available)
1.3	Flange Holes	Through
1.4	Basis-material	Alloyed Copper
1.5	Internal Finish	Sliver Plating
1.6	External Finish	Corrosion protected paint

2.0 Environment specifications		
2.1	Operation Temp.	-30°C~+70°C
2.2	Storage Temp.	-50°C~+125°C
2.3	Altitude	45000 ft
2.4	Vibration	10g rms (15 degree 2KHz)
2.5	Humidity	100% RH at 35c, 95%RH at 40 deg c
2.6	Shock	20G for 11msc

3.0 Electrical Specifications		
3.1	Frequency Range	3.95-5.85GHz (BW<=500MHz)
3.2	Max. Insertion Loss/IL WOW	0.2dB/0.1dB
3.3	Max. VSWR / VSWR WOW	1.15:1 / 1.02 :1
3.4	Power Handling(average)	1000W(CW) 100KW peak (1% 13.5us)
3.5	Pressure	10PSI

PAGE 1 OF 1	DATE Feb 17 th 2011
PROPRIETARY INFORMATION THE INFORMATION CONTAINED IN THIS DOCUMENT IS THE PROPERTY OF RF-LAMBDA EXCEPT AS SPECIFICALLY AUTHORIZED IN WRJUTBGS BY RF-LAMBDA. THE HOLDER OF THIS DOCUMENT SHALL KEEP ALL INFORMATION CONTAINED HEREIN CONFIDENTIAL AND SHALL PROTECT SAME IN THE WHOLE OR IN PART FROM DISCLOSURE AND DISSEMINATION OF ALL THIRD PARTIES AND SHALL USE SAME FOR OPERATING AND MAINTENANCE PURPOSES ONLY	
RFWRJ187SU WAVEGUIDE ROTARY JOINT	DESIGN RFPC RF-LAMBDA RFPC CAD MODEL REVISION 11 ASSEMBLY REVISION VS5DS ASSEMBLY NAME RFLVR05 DRAWING NUMBER D05-1
www.rflambda.com RF-LAMBDA	SIZE LT SHEETS 1 OF 1