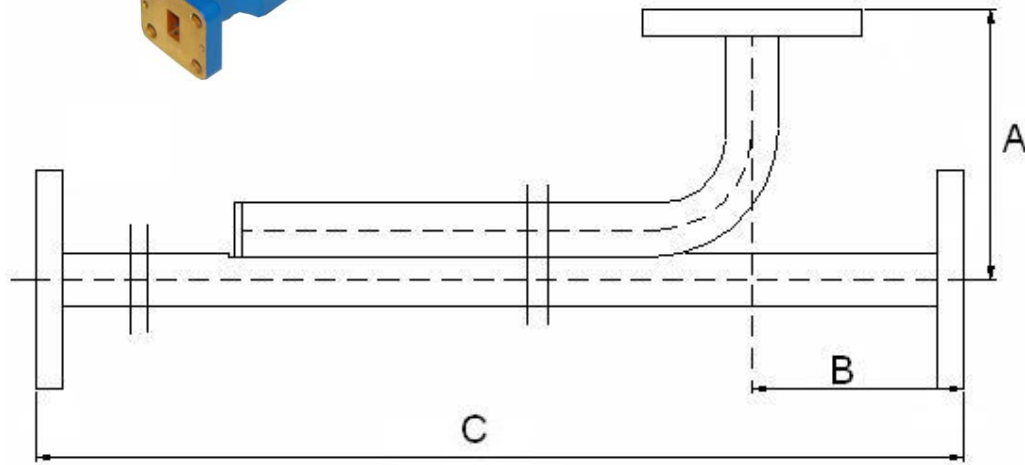
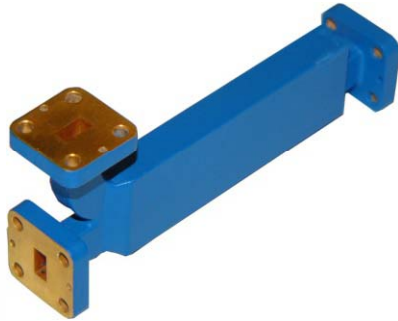


# WAVEGUIDE WR18 DIRECTIONAL COUPLER - RWGCP18SX



1.0 Mechanical Specifications		
1.1	Waveguide type	Rectangular Waveguide WR18
1.2	Flange type	CPRG, CPRF, COVER, CHOKE available
1.3	Flange Holes	Through
1.4	Basis-material	Cuprum
1.5	Internal Body Finish	Silver Plated chromate or conversion
1.6	External Body Finish	Body painted with gray/black epoxy enamel

2.0 Environment specifications		
2.1	Operation Temp.	-40°C~+85°C
2.2	Storage Temp.	-60°C~+125°C
2.3	Altitude	45000 ft
2.4	Vibration	10g rms (15 degree 2KHz)
2.5	Humidity	100% RH at 35c, 95%RH at 40 deg c
2.6	Shock	20G for 11msc

Electrical Specifications							
Part Number	Frequency Range	VSWR	Coupling	Dimension (inch)			Direction
				A	B	C	
RWGCP18SA	39.2-59.6GHz	≤1.15	3 ± 1	1.30	0.71	7.09	A>25dB B>30dB C>35dB D>40dB
RWGCP18SB			6 ± 1.2	1.30	0.71	6.69	
RWGCP18SC			10 ± 1.5	1.30	0.71	6.3	
RWGCP18SD			20 ± 2	1.30	0.71	5.91	
RWGCP18SE			30 ± 3	1.30	0.71	5.51	

PAGE	OF	DATE	Jul 10 <sup>th</sup> 2007
<small>PROPRIETARY INFORMATION THE INFORMATION CONTAINED IN THIS DOCUMENT IS THE PROPERTY OF RF-LAMBDA EXCEPT AS SPECIFICALLY AUTHORIZED IN WRITINGS BY RF-LAMBDA. THE HOLDER OF THIS DOCUMENT SHALL KEEP ALL INFORMATION CONTAINED HEREIN CONFIDENTIAL AND SHALL PROTECT SAME IN THE WHOLE OR IN PART FROM DISCLOSURE AND DISSEMINATION OF ALL THIRD PARTIES AND SHALL USE SAME FOR OPERATING AND MAINTENANCE PURPOSES ONLY</small>		DESIGN	RFPC
		RF-LAMBDA	RFPC
		CAD MODEL REVISION	0-4
		ASSEMBLY REVISION	VS2DS
		ASSEMBLY NAME	RFLVR011
		DRAWING NUMBER	D02-1
www.rflambda.com		SIZE	SHEETS
RF-LAMBDA		LT	1 OF 1