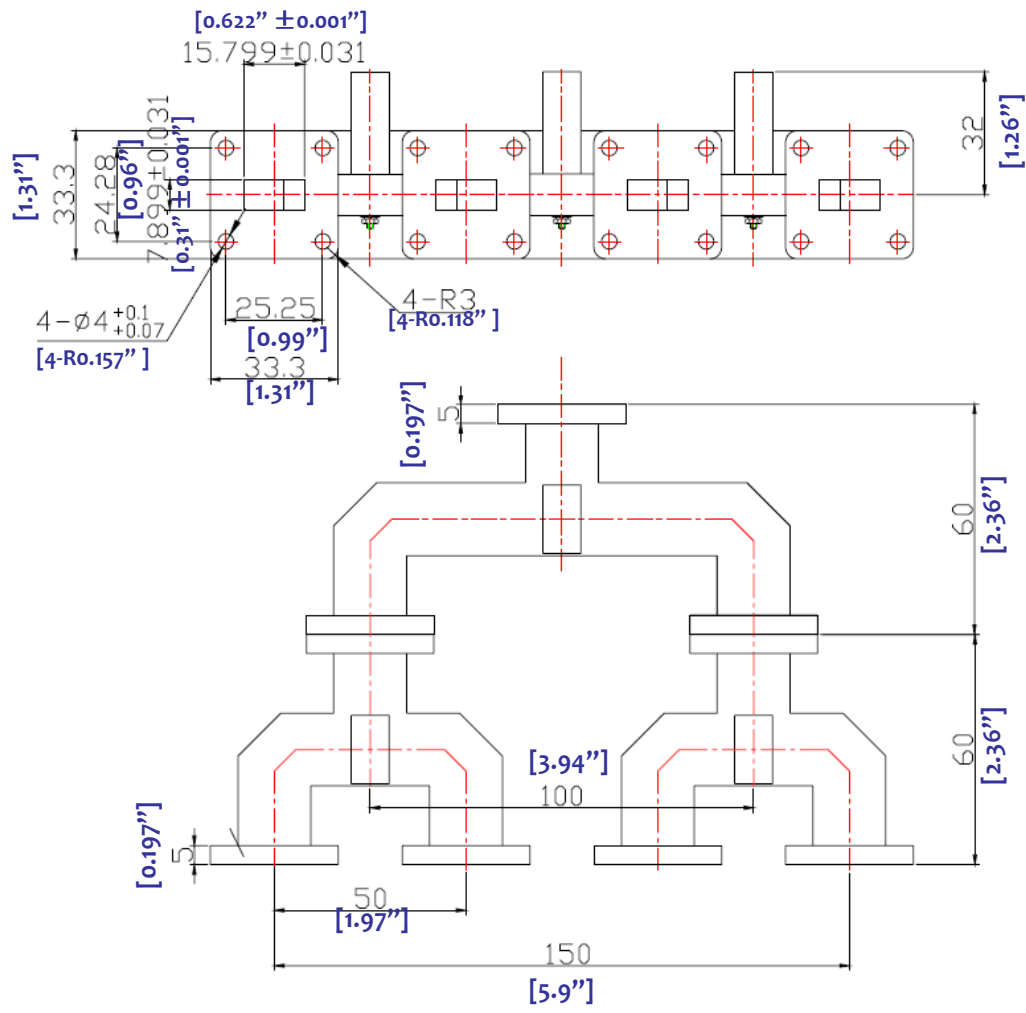



# WAVEGUIDE WR62 4-WAY POWER COMBINER- RWCB62W4A



1.0 Mechanical Specifications		
1.1	Waveguide type	Rectangular Waveguide WR62
1.2	Flange type	COVER (Other type available)
1.3	Flange Holes	Through
1.4	Basis-material	Aluminum or Cuprum Alloyed
1.5	Internal Body Finish	Silver Plated chromate or conversion
1.6	External Body Finish	Body painted with gray/black epoxy enamel

2.0 Environment specifications		
2.1	Operation Temp.	-40°C~+85°C
2.2	Storage Temp.	-60°C~+125°C
2.3	Altitude	45000 ft
2.4	Vibration	10g rms (15 degree 2KHz)
2.5	Humidity	100% RH at 35c, 95%RH at 40 deg c
2.6	Shock	20G for 11msc

3.0 Electrical Specifications		
3.1	Center Frequency	12.4-18GHz
3.2	Insertion Loss	0.5dB
3.3	VSWR	1.20 : 1
3.4	Amp Balance	0.5dB
3.5	Bandwidth	10~20%
3.6	Isolation	18dB

PAGE 1 OF 1	DATE Aug 23 <sup>rd</sup> 2003
<small>PROPRIETARY INFORMATION THE INFORMATION CONTAINED IN THIS DOCUMENT IS THE PROPERTY OF RF-LAMBDA EXCEPT AS SPECIFICALLY AUTHORIZED IN WRITING BY RF-LAMBDA. THE HOLDER OF THIS DOCUMENT SHALL KEEP ALL INFORMATION CONTAINED HEREIN CONFIDENTIAL AND SHALL PROTECT SAME IN THE WHOLE OR IN PART FROM DISCLOSURE AND DISSEMINATION OF ALL THIRD PARTIES AND SHALL USE SAME FOR OPERATING AND MAINTENANCE PURPOSES ONLY</small>	
 <b>RWCB64W4A WAVEGUIDE COMBINER</b>	
DESIGN	RFPC
RF-LAMBDA	RFPC
CAD MODEL REVISION	10
ASSEMBLY REVISION	VS2D5
ASSEMBLY NAME	RFLVR02
DRAWING NUMBER	D01-1
<a href="http://www.rflambda.com">www.rflambda.com</a>	
RF-LAMBDA	SIZE LT SHEETS 1 OF 1