



Absorptive and Reflective SP6T PIN Diode Switch



Features

- Wide Band Operation
- High Power up to 200W upon request.
- TTL compatible driver include
- Fast Switching Speed
- Low Insertion Loss and High Isolation
- Temperature Range -55°C~+85°C
- Customization available upon request

Absorptive SP6T Switch						
Part Number	Frequency (GHz)	Insert. Loss (dB)	VSWR (Max:1)	Isolation (dB)	Avg. Power (Watts)	Speed (ns)
RFSP6TA0002M	0.001~0.2	1.60	1.50	70	1~5	1000
RFSP6TA0005M	0.02~0.5	1.70	1.50	80	1~5	100~500
RFSP6TA0001G	0.02~1	1.70	1.50	70	1~5	100
RFSP6TA0501G	0.5~1	1.80	1.50	80	1~5	100
RFSP6TA0102G	1~2	1.60	1.50	80	1~5	50
RFSP6TA0003G	0.02~3	2.80	1.70	60	1~5	100
RFSP6TA0004G	0.5~4	2.00	1.50	60	1~5	50
RFSP6TA0204G	2~4	2.00	1.50	80	1~5	50
RFSP6TA0208G	2~8	2.40	2.00	60	1~5	50
RFSP6TA0612G	6~12	3.00	2.00	60	1~5	50
RFSP6TA0218B	2~18	4.10	2.20	60	1~5	50
RFSP6TA0618G	6~18	3.80	2.00	60	1~5	50
RFSP6TA0118G	1~18	3.80	2.00	60	1	50
Reflective SP6T Switch						
Part Number	Frequency (GHz)	Insert. Loss (dB)	VSWR (Max:1)	Isolation (dB)	Avg. Power (Watts)	Speed (ns)
RFSP6TR0002M	0.001~0.2	1.50	1.50	70	1~200	1000
RFSP6TR0005M	0.02~0.5	1.60	1.50	80	1~200	100~500
RFSP6TR0001G	0.02~1	1.60	1.50	70	1~100	100~500
RFSP6TR0501G	0.5~1	1.70	1.50	80	1~200	100~500
RFSP6TR0102G	1~2	1.40	1.50	80	1~200	100~500
RFSP6TR0003G	0.02~3	2.60	1.70	60	1~100	100~500
RFSP6TR0004G	0.5~4	2.00	1.50	60	1~100	100~500
RFSP6TR0204G	2~4	1.60	1.50	80	1~100	100~500
RFSP6TR0208G	2~8	2.40	2.00	60	1~50	100~500
RFSP6TR0612G	6~12	3.00	2.00	60	1~30	100~500
RFSP6TR0218G	2~18	3.20	2.20	80	1~10	100~500
RFSP6TR0618G	6~18	3.50	2.00	60	1~10	100~500

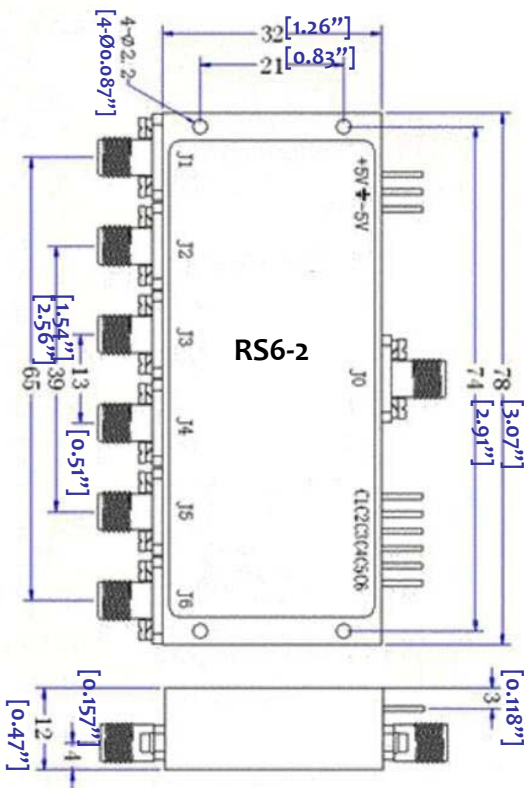
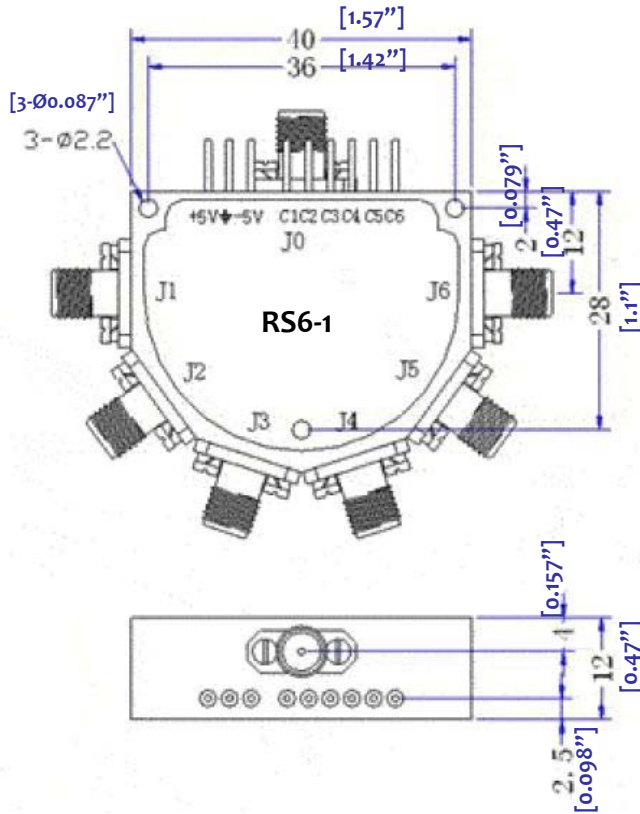


RF-LAMBDA

The power beyond expectations

SP6T PIN Diode Switch

Absorptive / Reflective Coaxial Single Pole Six Throw Switch



Electrical Operation

DC Biasing: +5.0V (+/-0.5V 200mA max.)
-5.0V (+/-0.5V 50mA max.)

TTL Logic Control:

Logic 0: Insertion Loss

Logic 1: Isolation

C1 Control J1-Jo

C2 Control J2-Jo

C3 Control J3-Jo

C4 Control J4-Jo

C5 Control J5-Jo

C6 Control J6-Jo

Power Handle: 0.2W ~200W

Mechanical Specification

Case Style: RS6-1 & RS6-2

Finishing: Gold plating for brass material
Other finishing available

Connector: SMA-F Per MIL-C-39012

Control PIN: 0.02" dia x 0.15" solder pins

Weight: 70 grams max.

Mounting: (4) 0.085" dia through holes

Material: Passivation for Aluminium material

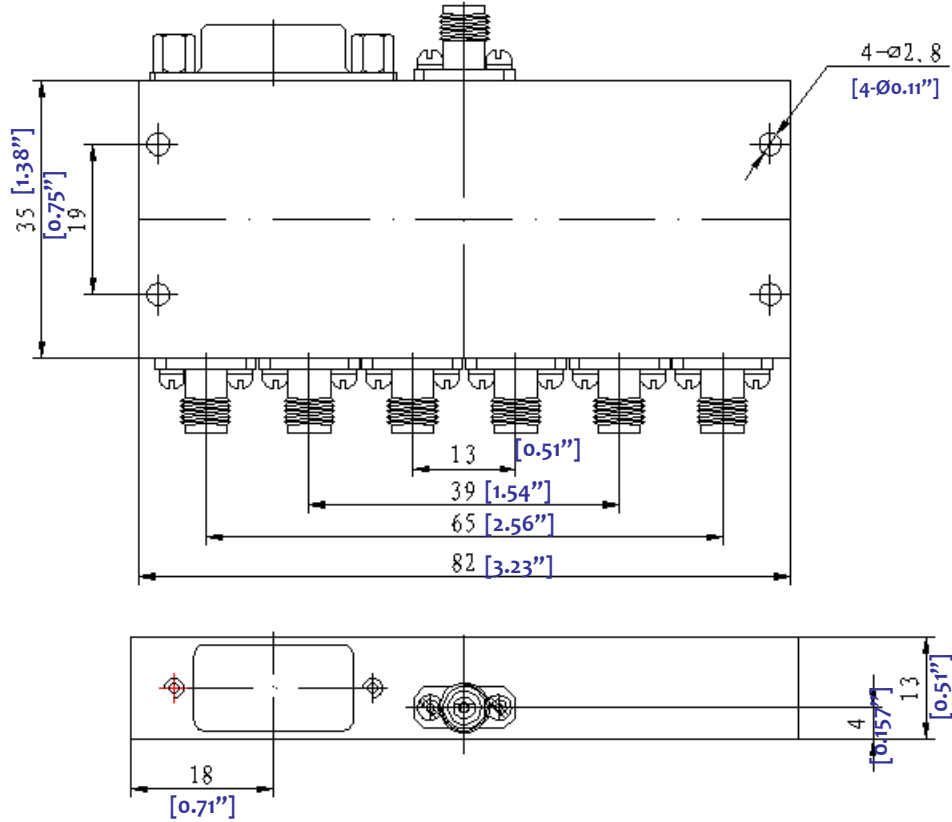
Note: Contact RF-Lambda for faster switching speed, higher power handle, higher isolation

1.Higher power handle capability will give lower isolation , higher biasing current and slower switching speed.

2.Narrower frequency band will improve insertion loss and isolation.



RS6-3



- ①. +5V ②. -5V ③. GND ④. C1 ⑤. C2 ⑥. C3
 ⑦. ⑧. ⑨. GND

C3	C2	C1	
0	0	0	J0-J1
0	0	1	J0-J2
0	1	0	J0-J3
0	1	1	J0-J4
1	0	0	J0-J5
1	0	1	J0-J6