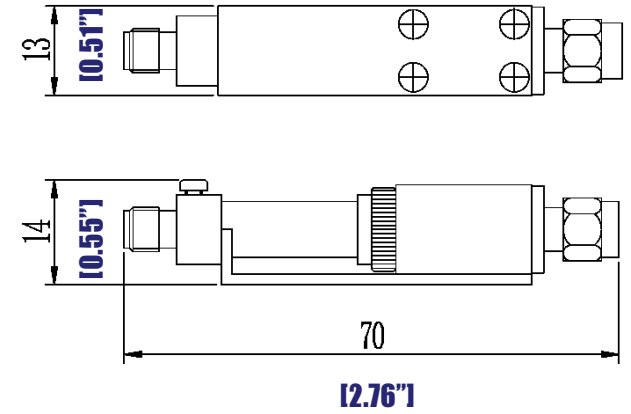
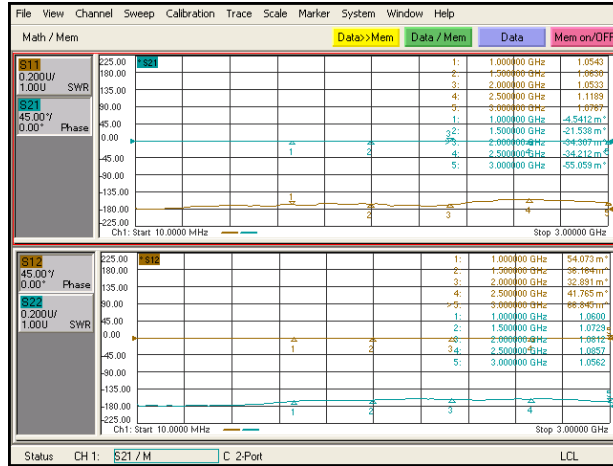
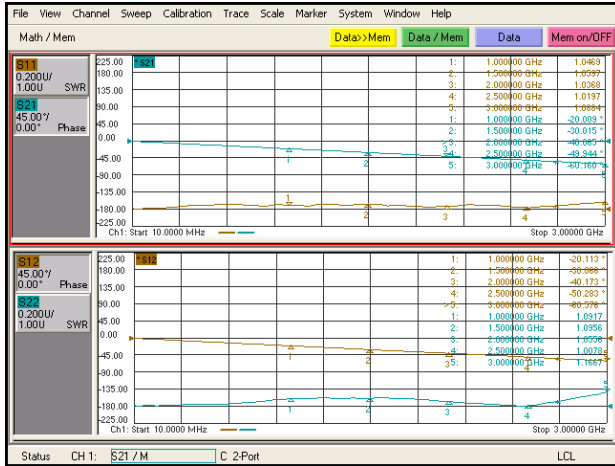


HIGH POWER PHASE SHIFTER


----RFPSHT0003W8



1.0	Mechanical Specifications	
1.1	Coaxial Connector	SMA (Male or Female)
1.2	Size	2.76" x 0.51" x 0.55" (70 x 13 x 14mm)
1.3	Weight	50g
1.7	External Body Finish	Body painted with golden epoxy enamel

3.0	Electrical Specifications				
Part Number	Frequency Rang (GHz)	Insertion Loss (dB)	Phase Adjustment	Max VSWR	CW / Peak Power (W/KW)
RFPSHT0003W8	DC-3	< 0.5	60° ***	1.3	50W CW / 2KW
***Phase Adjustment Range specification ONLY refer to the highest frequency point. Total Phase Adjustment Range is proportion of Frequency range. HALF the frequency range, HALF of the phase adjustment range. (For example 8GHz range 360°, then 4GHz will be 180° total range)					

2.0	Environment specifications	
2.1	Operation Temp.	-10°C~+50°C
2.2	Storage Temp.	-40°C~+70°C
2.3	Altitude	45000 ft
2.4	Vibration	10g rms (15 degree 2KHz)
2.5	Humidity	100% RH at 35c, 95%RH at 40 deg c
2.6	Shock	20G for 11msec

PAGE 1 OF 1		DATE	Oct 8 th 2006
<small>PROPRIETARY INFORMATION THE INFORMATION CONTAINED IN THIS DOCUMENT IS THE PROPERTY OF RF-LAMBDA EXCEPT AS SPECIFICALLY AUTHORIZED IN WRITING BY RF-LAMBDA. THE HOLDER OF THIS DOCUMENT SHALL KEEP ALL INFORMATION CONTAINED HEREIN CONFIDENTIAL AND SHALL PROTECT SAME IN THE WHOLE OR IN PART FROM DISCLOSURE AND DISSEMINATION OF ALL THIRD PARTIES AND SHALL USE SAME FOR OPERATING AND MAINTENANCE PURPOSES ONLY</small>		DESIGN	RFPC
		RF-LAMBDA	RFPC
 RFPSHT0003W8 HIGH POWER PHASE SHIFTER		CAD MODEL REVISION	10
		ASSEMBLY REVISION	V552
		ASSEMBLY NAME	RFLVR07
www.rflambda.com		DRAWING NUMBER	D05-A
RF-LAMBDA		SIZE	SHEETS
		LT	1 OF 1