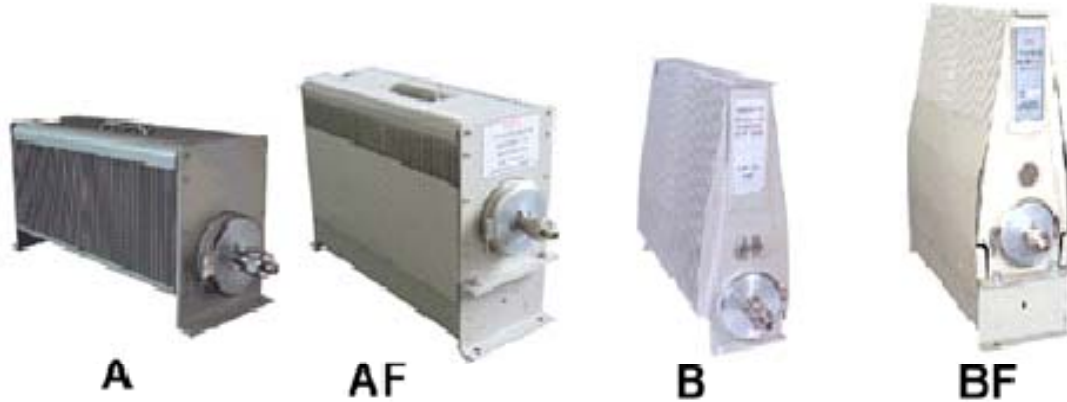




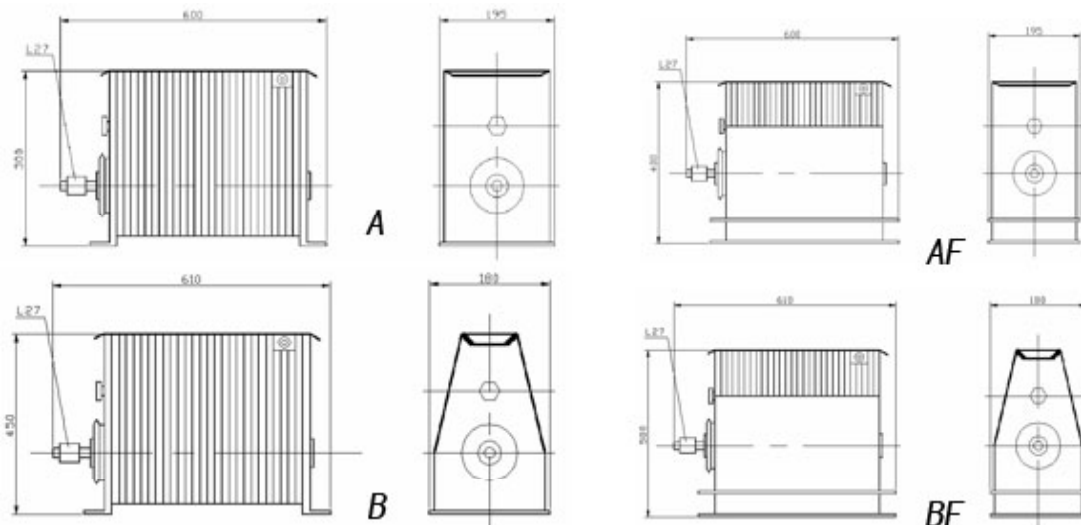
2000W CW HIGH POWER TERMINATION



Model	A	AF	B	BF
Size (inch)	19.69"x7.68"x10"	19.69"x7.68"x14.96"	24.02"x7.09"x17.72"	24.0"x7.48"x22.83"
(mm)	500×195×254	500×195×380	610×180×450	610×190×580
Weight (lb.)	44.0lb.	50.6lb.	59.4lb.	66.0lb.
(Kg)	20kg	23kg	27kg	30kg

PN: RFST2000G02
 Peak Power: 100KW
 Average Power: 2000W

Frequency: DC-2.0GHz
 Impedance: 50Ω
 VSWR: 1.4:1
 Cooling: Oil Cooling
 Connector: N, L27, L36





2500W AND 3000W CW HIGH POWER TERMINATION

PN: RFST2500G02
RFST3000G02

Peak Power: 100KW

Average Power: 2500W/3000W

Frequency: DC-2.0GHz

Impedance: 50Ω

VSWR: 1.4 (DC-2GHz)

Peak Power 100KW (5µs Pulse)

Connector: N, L27, L36

Dimension: 24.80"x12.20"x27.56" (630×310×700mm)
35.83"x13.00"x33.46" (910×330×850mm)

Weight: 149lb. (68Kg)
242lb. (110Kg)

Cooling: Oil Cooling

