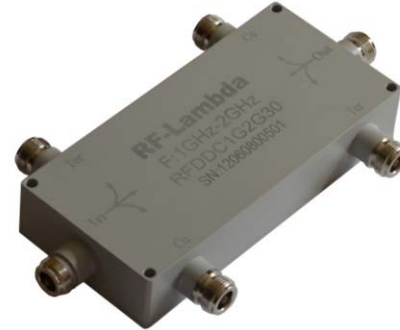




WIDE BAND 500W HIGH POWER DUAL DIRECTIONAL COUPLER 1-2GHz



- Ultra wide band performance 1-2GHz
- High power operation up to 500W CW, 5KW peak power
- Compact size and low loss.
- Low passive inter-modulation product.
- Customized unit available.
- Applicable for base station, repeaters of CMDA GSM and UMTS cellular network

Electrical Specifications			
Frequency	1-2GHz	Power	500W CW / 10KW Peak
Coupling	30dB (Both Coupling Ports) Coupling ports can be same side or cross side.	Insertion Loss	0.20dB
Directivity	20dB	VSWR	1.20: 1
Accuracy	+/-0.8dB	Flatness	+/-0.5dB
Environmental Specifications			
Operational Temp.	-40°C to 85°C base plate	Storage Temp.	-55°C to 120°C base plate
Altitude	30,000 ft		
Mechanical Specifications			
Humidity	95% relative humidity, 65°C 96Hour	Mechanical shock	30G, 11mSec half sin wave, 3 axis both directions
Vibration:	14.2g RMS (15-2000Hz) functional	Connectors:	N-Female Brass, Nickel Plate
	16.2g RMS (15-2000Hz) endurance, 1 hour/axis		Beryllium Copper, Gold Plate PIN

WIDE BAND 500W DUAL DIRECTIONAL COUPLER 1-2GHz

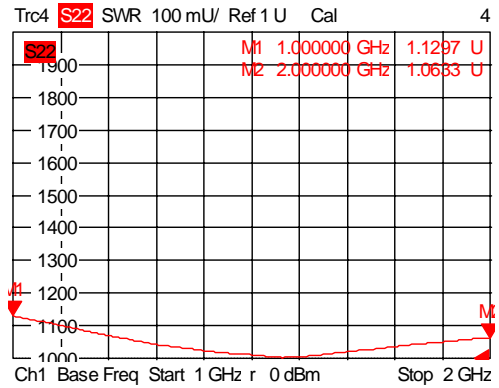
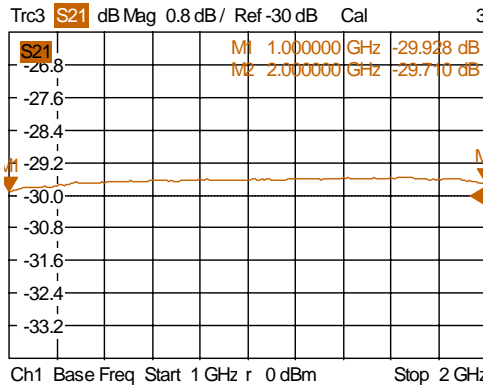
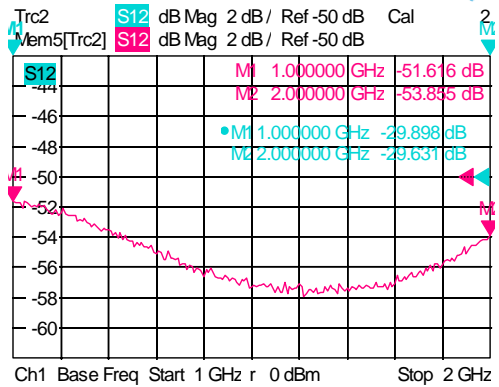
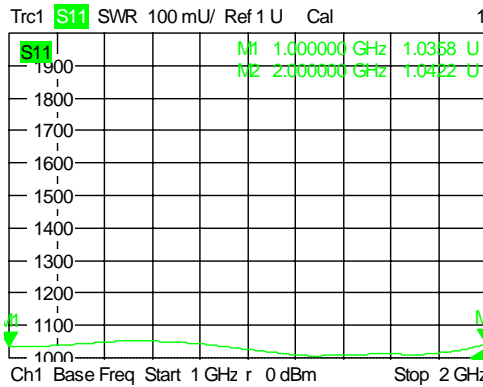
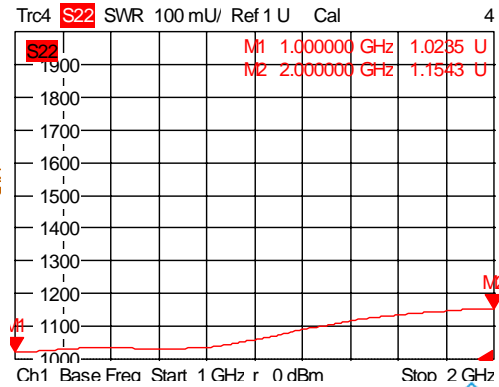
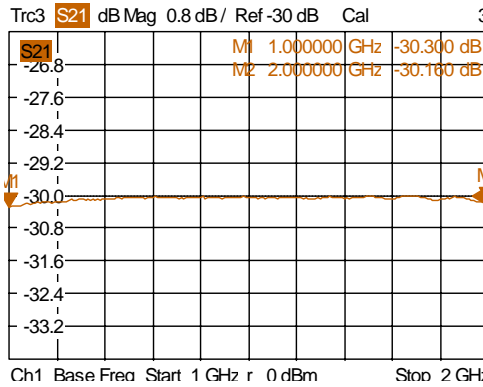
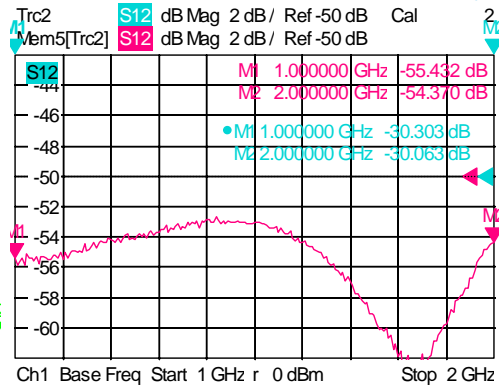
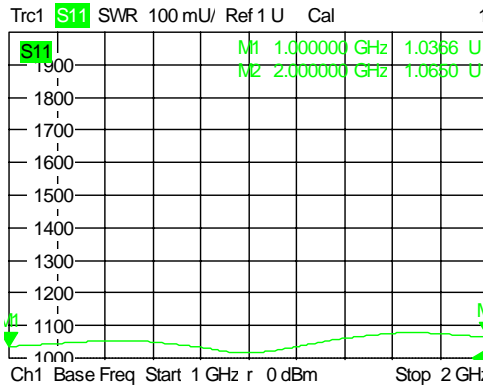


RF-LAMBDA

The power beyond expectations

RFDDC1G2G30

Testing Plot:



WIDE BAND 500W DUAL DIRECTIONAL COUPLER 1-2GHZ

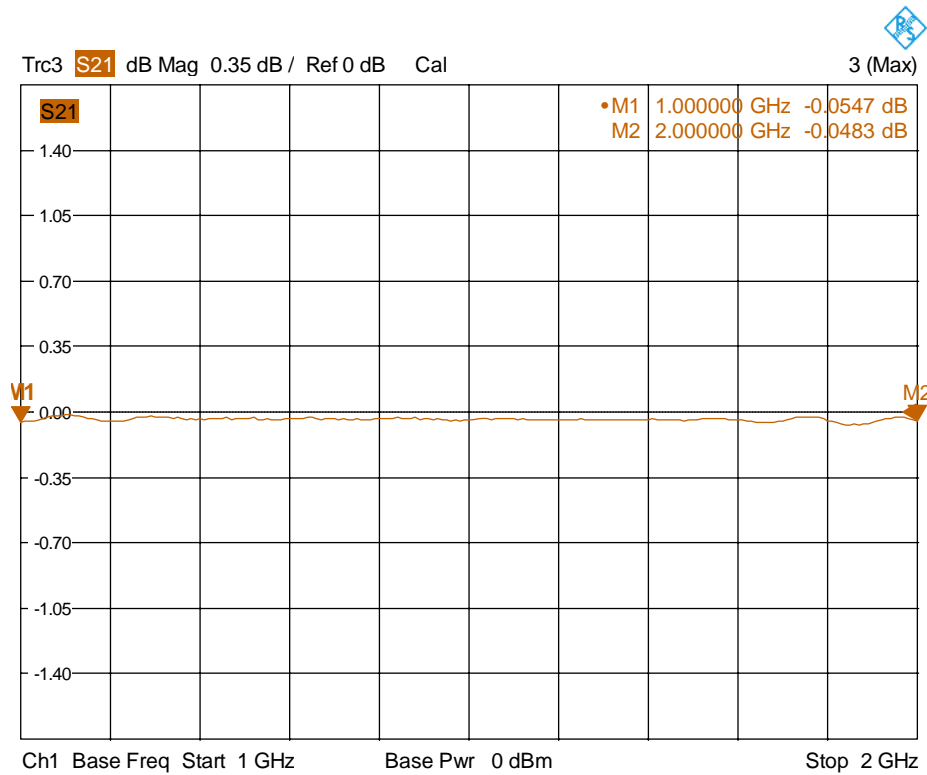


RF-LAMBDA

The power beyond expectations

RFDDC1G2G30

WIDE BAND 500W DUAL DIRECTIONAL COUPLER 1-2GHZ



DRAWING:

