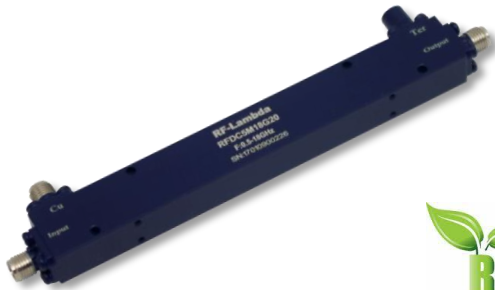




Coaxial 50W 20dB Directional Coupler 0.5 - 18GHz



Features

- High power handling up to 50W
- Wide band operation
- High isolation within operational band
- Low Insertion Loss
- Stable performance over temperature
- Aerospace and military applications
- LMDS multi-carrier operation
- High peak to average handling capability
- All specifications can be modified upon request

Coaxial 50W 20dB Directional Coupler 0.5 - 18GHz

Electrical Specifications, $T_A=25\text{ }^\circ\text{C}$

Parameters		Min.	Typ.	Max.	Min.	Typ.	Max.	Units
Frequency Range		0.5		12.4	12.4		18	GHz
Nominal Coupling		19	20	21.5	19	20	21.5	dB
Frequency Sensitivity			± 0.8	± 1.0		± 0.7	± 1.0	dB
Directivity		12	14		10	12		dB
Insertion Loss (Excl Coupling)				0.9			1.2	dB
Insertion Loss (true)			0.7	0.9		1.0	1.2	dB
VSWR Primary			1.3	1.5		1.4	1.6	: 1
VSWR Secondary			1.4	1.5		1.5	1.6	: 1
Power Rating	Average	50						W
	Peak	500						W
Impedance		50						Ohms
Weight		2.12						Ounces
Input / Output Connectors		SMA-Female						
Material		Aluminum						
Finishing		Blue Paint						

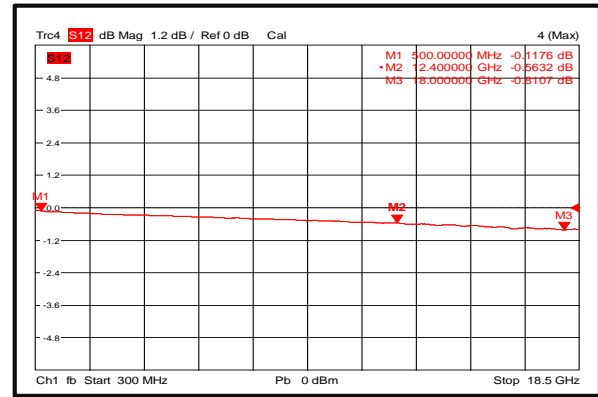


Environmental Specifications

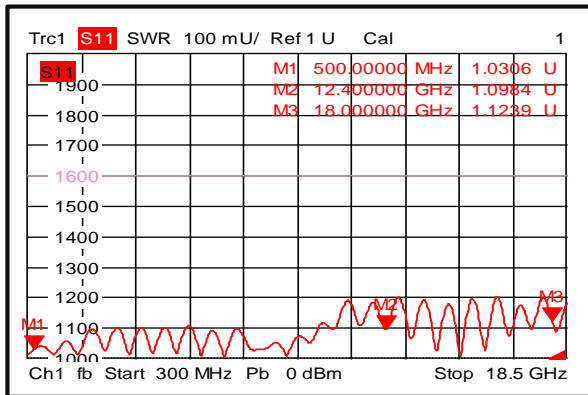
Operational Temperature (°C)	-45 to +85
Storage Temperature (°C)	-55 to +125
Altitude	30,000 ft. (Epoxy Sealed Controlled environment)
	60,000 ft. 1.0psi min (Hermetically Sealed Un-controlled environment) (Optional)
Vibration	25g RMS (15 degrees 2KHz) endurance, 1 hour per axis
Humidity	100% RH at 35c, 95%RH at 40 deg c
Shock	20G for 11msec half sine wave, 3 axis both directions

Typical Performance Plots

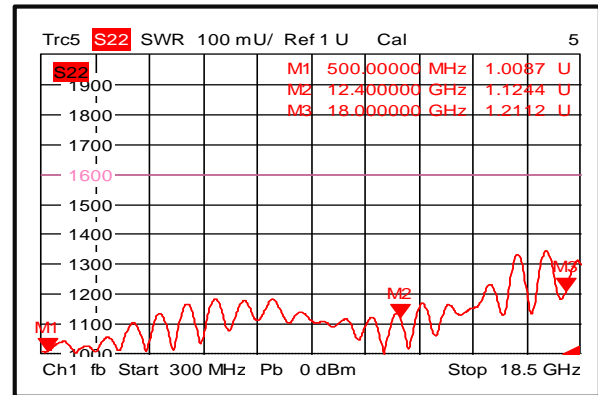
Insertion Loss



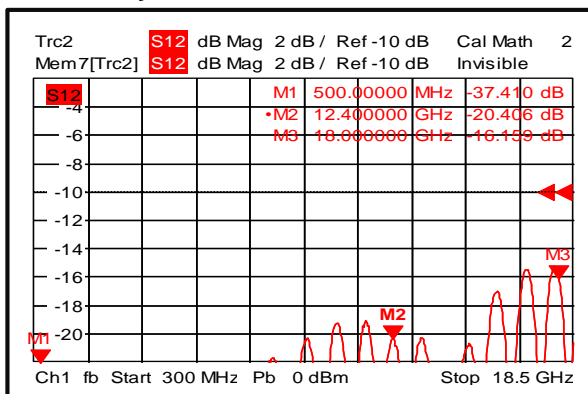
Primary VSWR



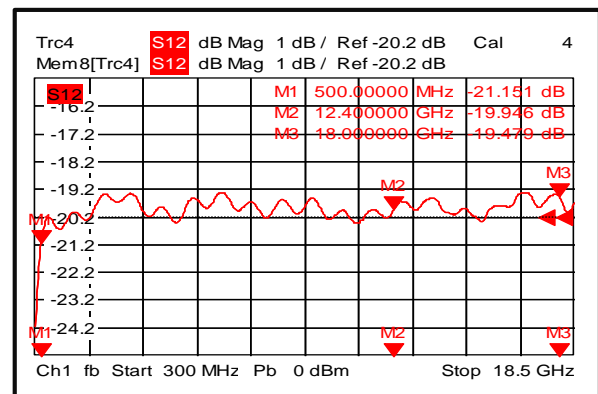
Secondary VSWR



Directivity



Nominal Coupling



Coaxial 50W 20dB Directional Coupler 0.5 - 18GHz



RF-LAMBDA

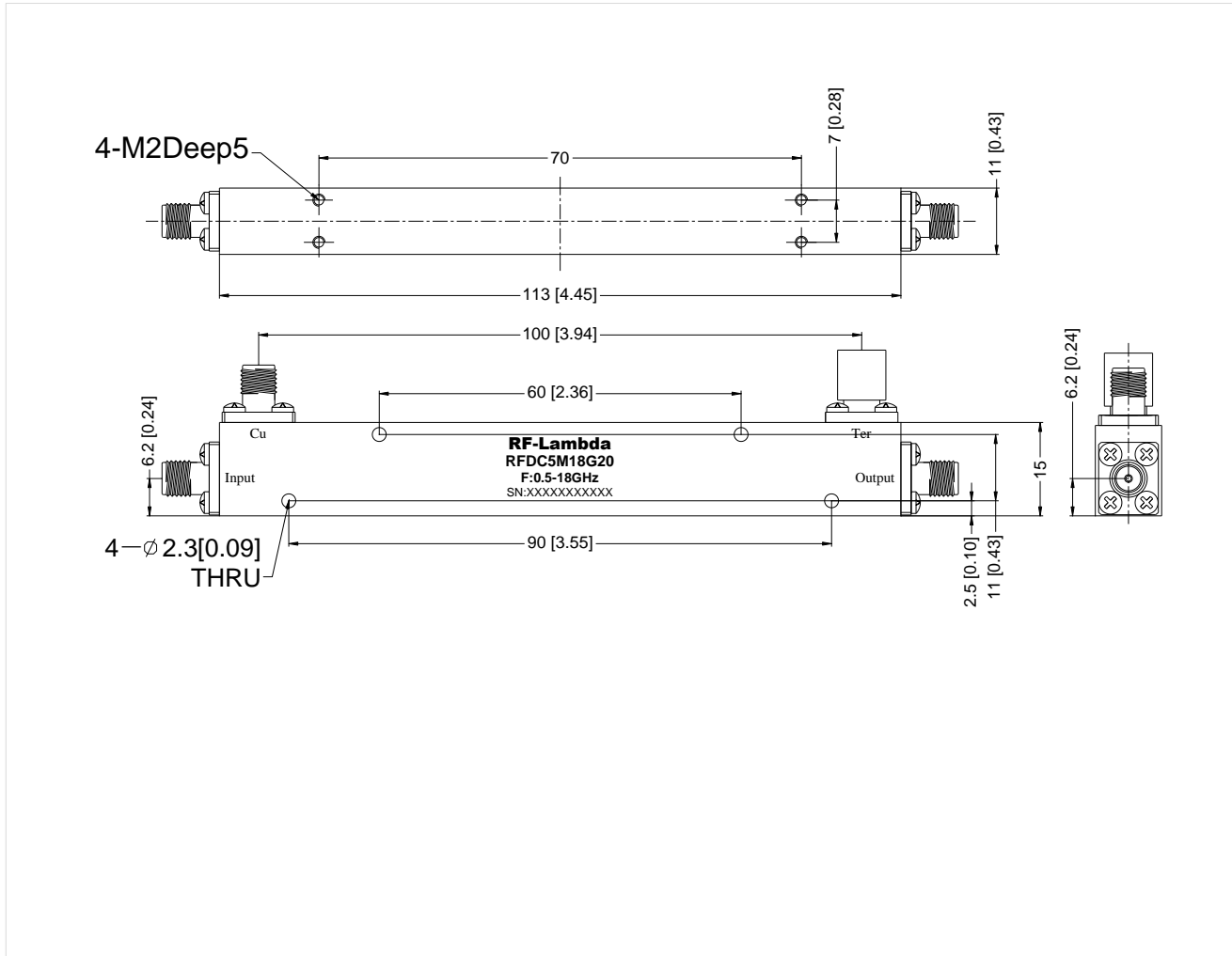
LEADER OF RF BROADBAND SOLUTIONS

RFDC5M18G20

Outline Drawing:

All Dimensions in mm [inches]

Tolerance ± 0.25 [0.01]



Coaxial 50W 20dB Directional Coupler 0.5 - 18GHz

Important Notice

The information contained herein is believed to be reliable. RF-Lambda makes no warranties regarding the information contained herein. RF-Lambda assumes no responsibility or liability whatsoever for any of the information contained herein. RF-Lambda assumes no responsibility or liability whatsoever for the use of the information contained herein. The information contained herein is provided "AS IS, WHERE IS" and with all faults, and the entire risk associated with such information is entirely with the user. All information contained herein is subject to change without notice. Customers should obtain and verify the latest relevant information before placing orders for RF-Lambda products. The information contained herein or any use of such information does not grant, explicitly or implicitly, to any party any patent rights, licenses, or any other intellectual property rights, whether with regard to such information itself or anything described by such information. RF-Lambda products are not warranted or authorized for use as critical components in medical, life-saving, or life sustaining applications, or other applications where a failure would reasonably be expected to cause severe personal injury or death.