



# RF-LAMBDA

The power beyond expectations

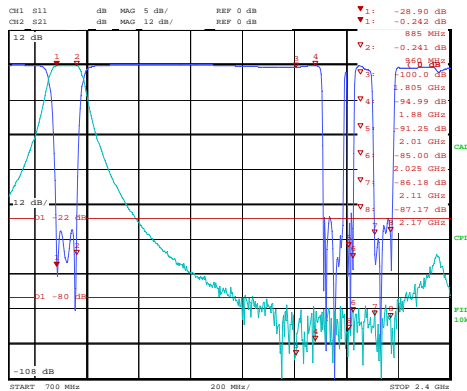
## RFDUPC8304

### GSM DCS TD-SCDMA Frequency Combiner

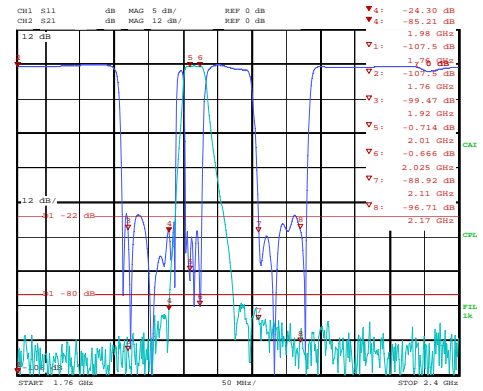
- Compact size and high power handle
- Very high rejection outdoor unit
- Compatible with ITU Standard
- Power Handle: 200W max
- N-Female and SMA-F connector available upon request
- Storage temperature -40~+85C
- Operational Temperature: -30~+75C
- Operating Humidity: 0~90% relative



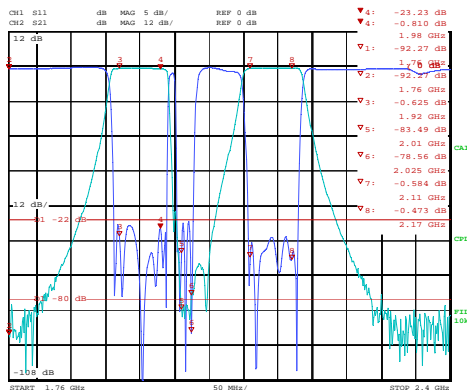
Electrical Specification	
Frequency Range	GSM:885~960MHz; DCS:1710~1880MHz; TD-SCDMA:2010~2025MHz
Insertion Loss:	0.3dB@GSM max;0.4dB@DCS max; 0.6dB@TD-SCDMA max
Pass band Ripple	0.3dB maximum
Return Loss	≤ -20dB
Out band Rejection	>85dB @ GSM ; >85dB @DCSA ; >85dB @ TD-SCDMA



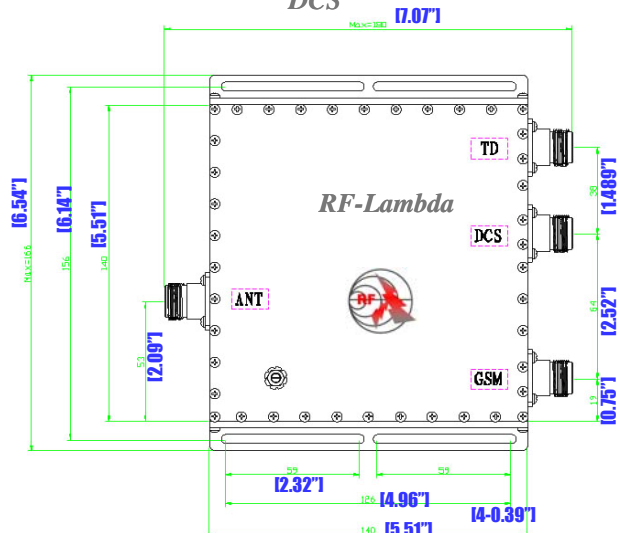
GSM



DCS



WCDMA



GSM DCS TD-SCDMA FREQUENCY COMBINER RFDUPC8304