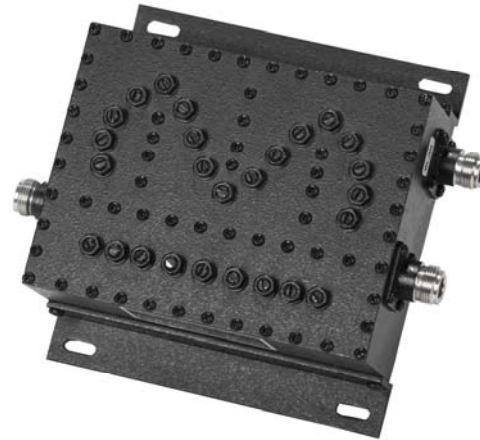




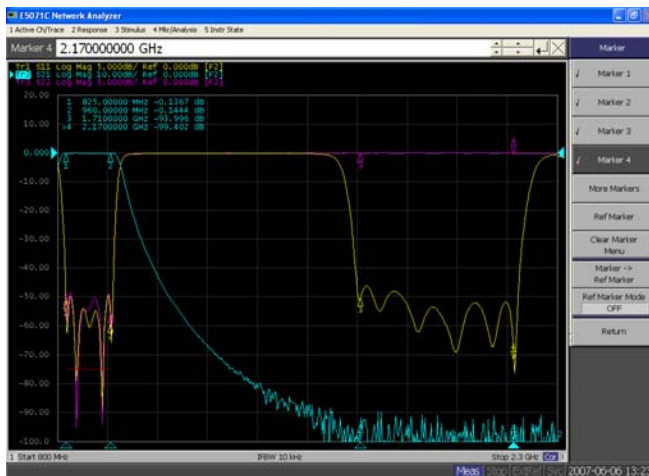
### CDMA GSM DCS WCDMA Frequency Combiner

- Compact size and high power handle
- Very high rejection outdoor unit
- Compatible with ITU Standard
- Power Handle: 200W max
- N-Female and SMA-F connector available upon request
- Storage temperature -40~+85C
- Operational Temperature: -30~+75C
- Operating Humidity: 0~90% relative

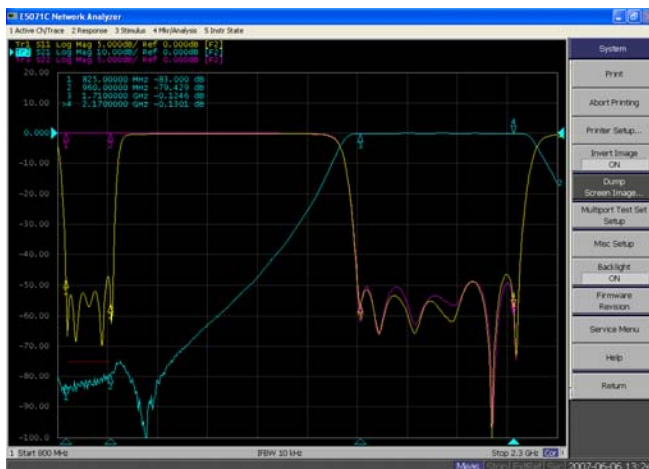


#### Electrical Specification

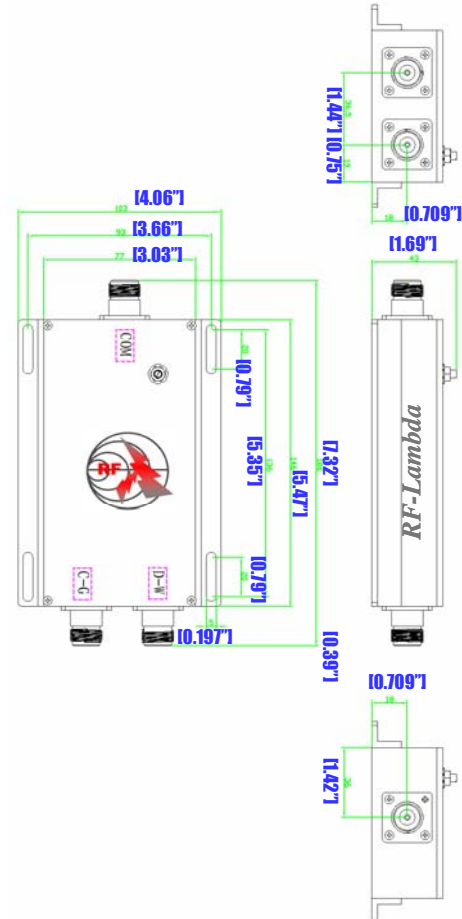
- Frequency Range:** CDMA-GSM:825~960 MHz  
DCS-WCDMA:1710~2170MHz
- Insertion Loss:** 0.4dB max
- Pass band Ripple:** 0.3dB maximum
- Return Loss:** ≤20dB
- Out band Rejection:** >75dB @ CDMA-GSM  
>75dB @ DCS-WCDMA



CDMA-GSM



DCS-WCDMA



CDMA GSM DCS WCDMA FREQUENCY COMBINER RFDUPC8214