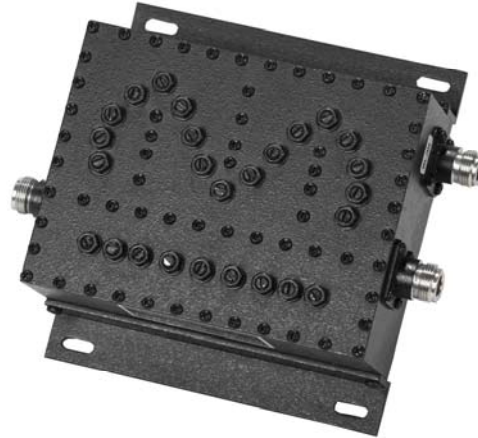




WCDMA DCS Frequency Combiner

- **Compact size and high power handle**
- **Very high rejection outdoor unit**
- **Compatible with ITU Standard**
- **Power Handle: 200W max**
- **N-Female and SMA-F connector available upon request**
- **Storage temperature -40~+85C**
- **Operational Temperature: -30~+75C**
- **Operating Humidity: 0~90% relative**



Electrical Specification

Frequency Range: DCS:1710~1880MHz
WCDMA: 1920~2170 MHz

Insertion Loss: 0.8dB max

Pass band Ripple: 0.5dB maximum

Return Loss: ≤20dB

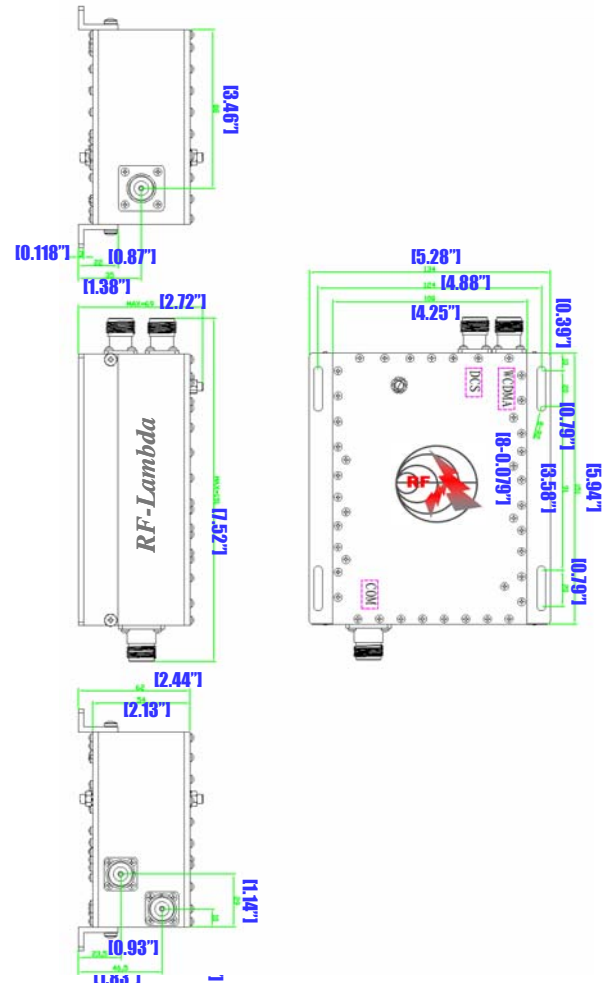
Out band Rejection: >80dB @ DCS



DCS



WCDMA



WCDMA DCS FREQUENCY COMBINER RFDUPC8213