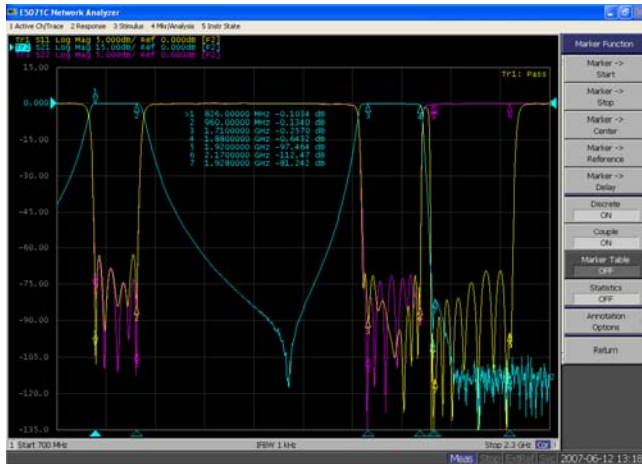
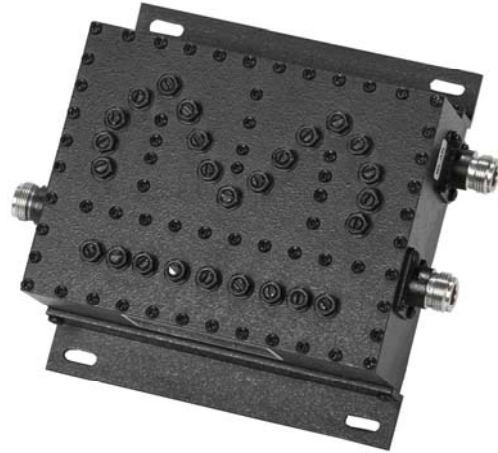




CDMA GSM WCDMA Frequency Combiner

- Compact size and high power handle
- Very high rejection outdoor unit
- Compatible with ITU Standard
- Power Handle: 200W max
- N-Female and SMA-F connector available upon request
- Storage temperature -40~+85C
- Operational Temperature: -30~+75C
- Operating Humidity: 0~90% relative



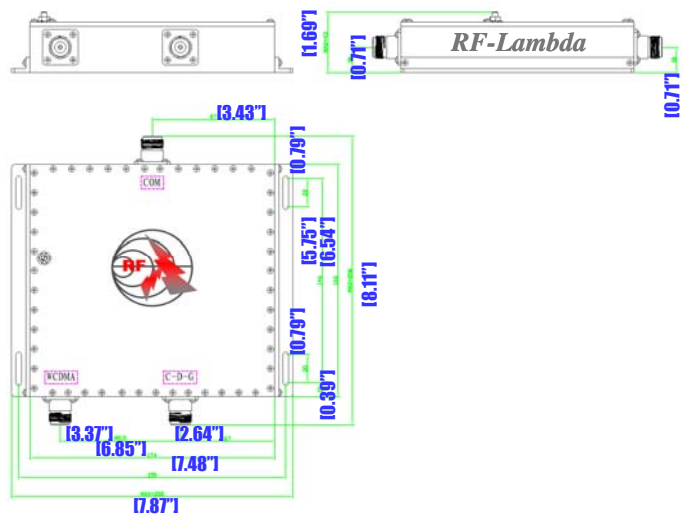
CDMA-GSM-DCS



WCDMA

Electrical Specification

- Frequency Range:** CDMA-GSM-DCS:825~1880MHz
WCDMA: 1920~2170 MHz
- Insertion Loss:** 0.4dB@CDMA-GSM-DCS max
1.0dB@WCDMA max
- Pass band Ripple:** 0.5dB maximum
- Return Loss:** ≤-20dB
- Out band Rejection:** >80dB @ CDMA-GSM-DCS
>80dB @ WCDMA



CDMA GSM WCDMA FREQUENCY COMBINER RFDUPC8212