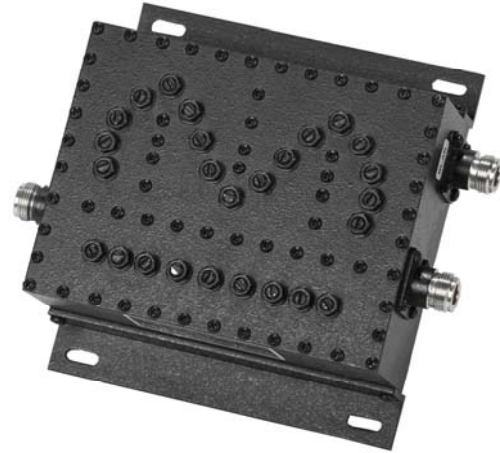


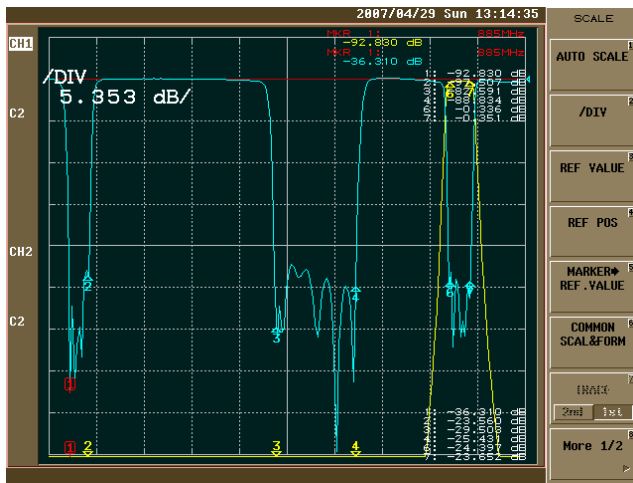


GSM DCS TD-SCDMA WLAN Frequency Combiner

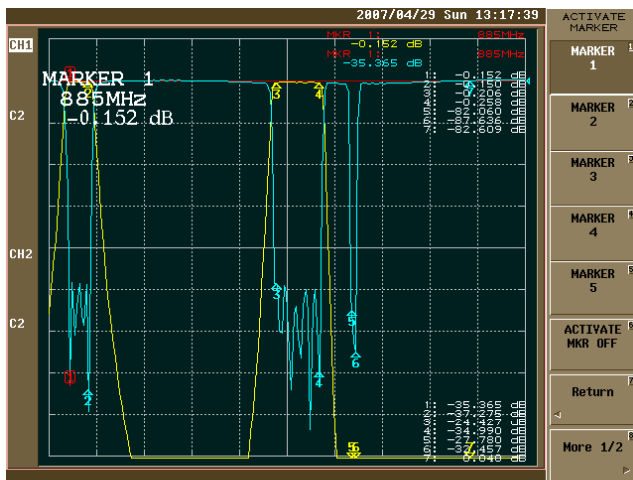
- Compact size and high power handle
- Very high rejection outdoor unit
- Compatible with ITU Standard
- Power Handle: 200W max
- N-Female and SMA-F connector available upon request
- Storage temperature -40~+85C
- Operational Temperature: -30~+75C
- Operating Humidity: 0~90% relative



TDS-CDMA GSM DCS FREQUENCY COMBINER RFDUPC8211



GSM-DCS-TD



WLAN

Electrical Specification

- Frequency Range:** GSM-DCS-TD:885~2025MHz
WLAN: 2400~2483.5MHz
- Insertion Loss:** 0.4dB@GSM-DCS-TD max
0.6dB@WLAN max
- Pass band Ripple:** 0.3dB maximum
- Return Loss:** ≤20dB
- Out band Rejection:** >85dB @ GSM-DCS
>85dB @ TD-SCDMA

