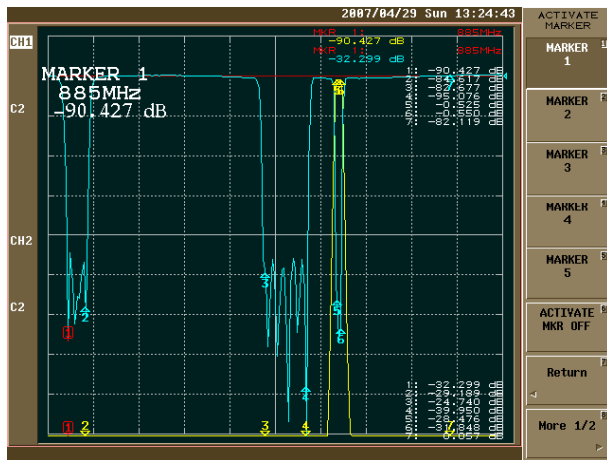
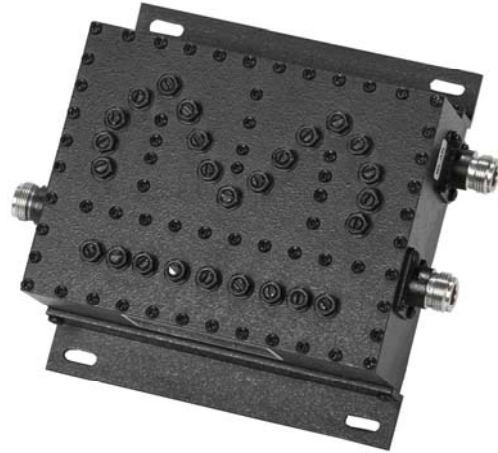


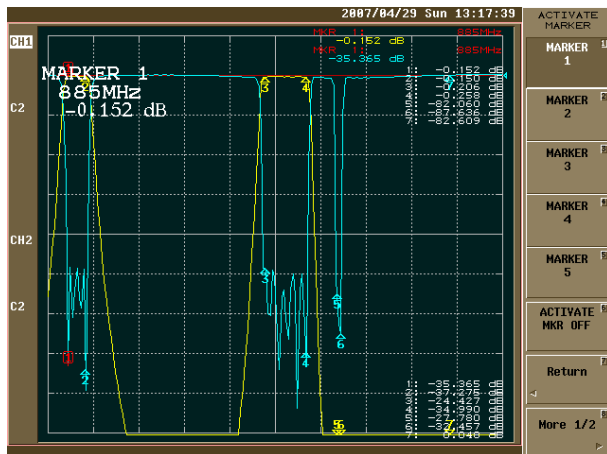


GSM DCS TD-SCDMA Frequency Combiner

- Compact size and high power handle
- Very high rejection outdoor unit
- Compatible with ITU Standard
- Power Handle: 200W max
- N-Female and SMA-F connector available upon request
- Storage temperature -40~+85C
- Operational Temperature: -30~+75C
- Operating Humidity: 0~90% relative



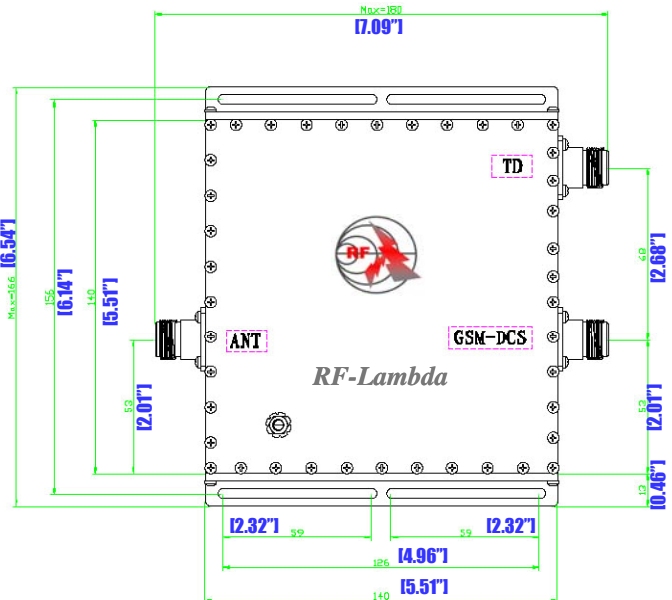
GSM-DCS



TD-SCDMA

Electrical Specification

- Frequency Range:** GSM-DCS:885~1880MHz
TD-SCDMA:2010~2025MHz
- Insertion Loss:** 0.4dB@GSM- DCS max
0.6dB@TD-SCDMA max
- Pass band Ripple:** 0.3dB maximum
- Return Loss:** ≤20dB
- Out band Rejection:** >85dB @ GSM-DCS
>85dB @ TD-SCDMA



GSM DCS TD-SCDMA FREQUENCY COMBINER RFDUPC8210